

# Naphill & Walter's Ash Gazette



July 2024

Annual subscription £5

*Jonathan & Julie*  
MERS PHOTO





# HEARING CARE SERVICES NOW AVAILABLE



JACKSON & Co

247 Main Road, Walters Ash // 01494 564600

# YOUR AWARD WINNING CHILTERN'S ESTATE AGENT



**We've won 3 awards at the UK's  
biggest agency event making EweMove  
The Best National Estate Agent.**

This is a huge achievement for us, as the Estate Agent Masters assesses over 15,000 agents nationwide.



We were judged on our property marketing, customer service and results during a data analysis project and a mystery shopping exercise. EweMove proudly excelled in all areas.

Rachel & Julian Butcher  
Branch Directors



Book your **FREE** valuation appointment.  
Select a date and time online at:  
**EweMove.com/Chilterns**  
or call (24/7): **01494 917 051**

Scan  
Me  
↓



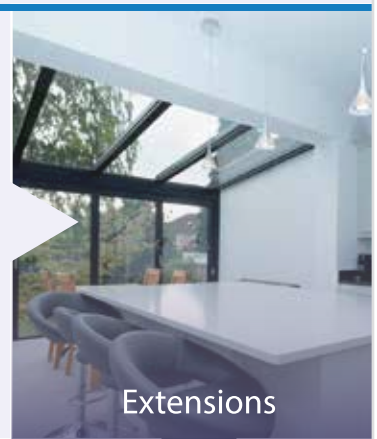
EweMove respects any existing sole agency agreement already in place with another agent.



Based in Naphill, with over 30 years of experience as construction specialists, we pride ourselves on being a traditional firm who prioritise excellent customer service, along with a craftsman's attention to detail.

Building is in our DNA. From renovations, to extensions, alterations and general building services, Sure-Build provide high-quality solutions at realistic prices.

Our team offer a range of building services from small alterations, kitchens and bathrooms to home extensions and garage conversions. No matter how big or small your project is, we can help.

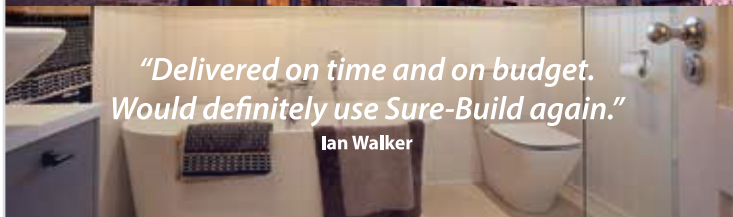


Extensions



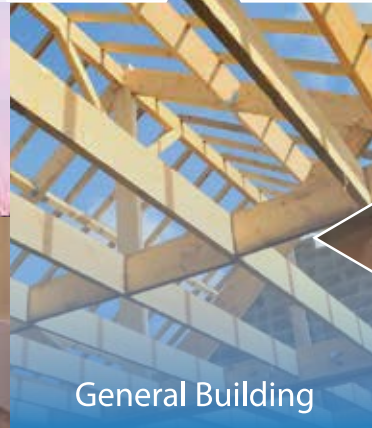
*"If you want a professional looking job and one that is well done, then I would recommend using Sure-Build every time!"*

Mr Burton

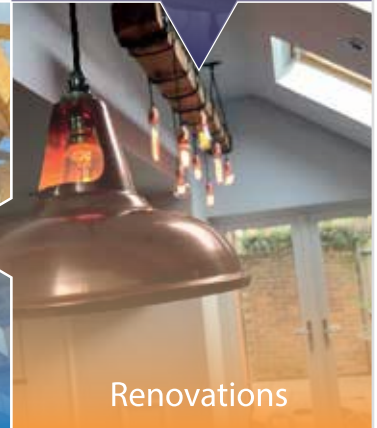


*"Delivered on time and on budget. Would definitely use Sure-Build again."*

Ian Walker



General Building



Renovations

M. 07929 207550 T. 01494 266332  
E. pervez@sure-build.co.uk  
W. www.sure-build.co.uk

**SURE-BUILD**  
Quality Without Compromise

# MOBILE TYRE FITTING WE COME TO YOU!

- Car, Van & High Performance Tyres
- Specialist Wheel Alignment Service
- Truck & Plant Tyre Specialist
- Trade/Accounts Welcome
- Wheel Balancing
- 4 x 4 Tyres

**Stockists Of All Leading  
Makes Of Tyres**



**T** *tyreteam*  
*mobile*

AAAAAA TYRETEAM MOBILE



**T: 01494 565920**



# Naphill & Walter's Ash Gazette

## July 2024

**EDITOR:** Sonia Goby - Tel: 569428 email: [editor@naphillandwaltersash.org.uk](mailto:editor@naphillandwaltersash.org.uk)

**ASSISTANT EDITOR:** Jonathan Hilder email: [assistant.editor@naphillandwaltersash.org.uk](mailto:assistant.editor@naphillandwaltersash.org.uk)

**ADVERTISING:** Sonia Goby - Tel: 569428 email: [editor@naphillandwaltersash.org.uk](mailto:editor@naphillandwaltersash.org.uk)

**TREASURER:** Hillary Spain; email: [treasurer@naphillandwaltersash.org.uk](mailto:treasurer@naphillandwaltersash.org.uk)

**DISTRIBUTION COORDINATORS:** Paul & Joanne Hewitt email: [distribution@naphillandwaltersash.org.uk](mailto:distribution@naphillandwaltersash.org.uk)

**WEBMASTER:** Peter Davis - email: [webmaster@naphillandwaltersash.org.uk](mailto:webmaster@naphillandwaltersash.org.uk)

**GAZETTE FACEBOOK COMMUNITY COORDINATOR** - Andria Benjamin

**GAZETTE FACEBOOK BUSINESS COORDINATOR** - Karen Kerr

**PRINTING:** Turville Printing Services -01494 520322

## Come and Join Us!

### *Our Local Clubs and Organisation Contacts*

Beavers		01494 447121	<a href="mailto:Groupleader@naphillscouts.org.uk">Groupleader@naphillscouts.org.uk</a>
Brownies (Naphill)	Ruth Daly	01494 565571	<a href="mailto:ruth.daly3@btinternet.com">ruth.daly3@btinternet.com</a>
Bridge Club	Margaret Stagg	01494 530736	
Cubs - Naphill			<a href="mailto:Groupleader@naphillscouts.org.uk">Groupleader@naphillscouts.org.uk</a>
Friends of Naphill Common	Chris Miller	01494 563707	<a href="mailto:chairman@naphillcommon.org.uk">chairman@naphillcommon.org.uk</a>
Men's Club	Andrew Wasilewski	01494 562770	<a href="mailto:naphillmensclub@yahoo.co.uk">naphillmensclub@yahoo.co.uk</a>
Residents Association	Gloria LeFlaive	01494 563634	<a href="mailto:glorialeflaive@msn.com">glorialeflaive@msn.com</a>
Naphill Neighbours	Janet Judge		
Scouts (Naphill)			<a href="mailto:Groupleader@naphillscouts.org">Groupleader@naphillscouts.org</a>
Tennis Club	Jenny Tench	01494 565406	<a href="mailto:uk.jttench@gmail.com">uk.jttench@gmail.com</a>
Naphill Football Club	Chris Keats		<a href="mailto:naphillfc@btinternet.com">naphillfc@btinternet.com</a>
Hughenden Street Association	Susan Bickerstaffe	07880 519323.	



## Massage And Facial Treatments at The Retro Retreat in Naphill

Swedish Massage  
Hot Stone Massage  
Very firm Massage  
Deep Tissue Massage  
Relaxing Massage  
Indian Head Massage  
Facials  
Dermalux Light Therapy  
Skin peels  
Eyebrow, Lip or underarm waxing  
Eyelash or eyebrow tinting  
Eyebrow Lamination

Message Andria Benjamin on Facebook: The Retro Retreat  
Webpage: [THERETRORETREAT.COM](http://THERETRORETREAT.COM) or text/call/Whatsapp on 07570985777

# PLANET WHEELS

- ALLOY WHEEL REFURBISHMENT
- WHEEL STRAIGHTENING
- CRACKED ALLOY REPAIRS
- SAND BLASTING
- POWDER COATING
- DIAMOND CUTTING



[www.planet-wheels.com](http://www.planet-wheels.com)

01494 564 444





# Naphill Village Hall



**Chairman** - Clive Lawrence

Email: [chairman@naphillvillagehall.org.uk](mailto:chairman@naphillvillagehall.org.uk)

**Bookings** - Tanya Stevens

Email: [hallbookings@naphillvillagehall.org.uk](mailto:hallbookings@naphillvillagehall.org.uk)

Tel: 07851 169275

[www.naphillvillagehall.org.uk](http://www.naphillvillagehall.org.uk)

## Local Council Contact Information

Bradenham Parish Council Clerk	Deirdre Hanson	01494 562254	<a href="mailto:clerkbradenhampc@gmail.com">clerkbradenhampc@gmail.com</a>
Hughenden Parish Council	Clerk Vacant	01494 715296	<a href="mailto:clerk@hughenden-pc.gov.uk">clerk@hughenden-pc.gov.uk</a>
Hughenden Parish Councillors	Usha Prashar	07778 141920	<a href="mailto:usha.prashar@hughenden-pc.gov.uk">usha.prashar@hughenden-pc.gov.uk</a>
Hughenden Parish Councillors	Marc Byrom	0777 1754501	<a href="mailto:marc.byrom@hughenden-pc.gov.uk">marc.byrom@hughenden-pc.gov.uk</a>
Hughenden Parish Councillor	Chris Janes		<a href="mailto:chris.janes@hughenden-pc.gov.uk">chris.janes@hughenden-pc.gov.uk</a>
Buckinghamshire Councillor	Steve Broadbent	07471 144181	<a href="mailto:Steve.Broadbent@buckinghamshire.gov.uk">Steve.Broadbent@buckinghamshire.gov.uk</a>
Buckinghamshire Councillor	David Carroll	01494 716967	<a href="mailto:David.Carroll@buckinghamshire.gov.uk">David.Carroll@buckinghamshire.gov.uk</a>
Buckinghamshire Councillor	Clive Harriss	07768 876568	<a href="mailto:Clive.Harriss@buckinghamshire.gov.uk">Clive.Harriss@buckinghamshire.gov.uk</a>

## Helpful Contact Numbers

Hughenden Surgery	See website <a href="http://www.ourpractice.co.uk">www.ourpractice.co.uk</a>	01494 562189
Out of surgery hours		111
Breast Unit Wycombe Hospital	Breast lumps self refer	01494 526161
Stroke Support Service	Stroke sufferers, carers & family support	0300 3300 761
Shaw Clinic - Genitourinary Medicine	Genitourinary Medicine	01494 425430
Hearing Clinic Wycombe Hospital	Self refer	01494 526161
Healthy Minds	Anxiety, depression, stress, postnatal wellbeing	01865 901 6000
Bereavement Listening & Support	Bereavement counselling	1296 332600
Wycombe Women's Aid/Also Men	Counselling re domestic violence	01494 461367
		Male 0808 8010 327
Carers Bucks	Help for carers	0300 7772 722
Alzheimer's Society	Dementia information & support	01296 331722



# Piers Photography



Jonathan Hilder is your local photographer  
based in Coombe Lane, Naphill

Weddings - Portraits

Events - Real Estate

*Even likes working with children  
and animals!*

*Give me a call to discuss your plans*

[www.piersphoto.com](http://www.piersphoto.com)

[jonathan@piersphoto.com](mailto:jonathan@piersphoto.com)

07787 505 786

*Jonathan Hilder*  
PIERS PHOTO

*Master Craftsman with the Guild of Photographers*



Camomile PT  
Personal Training  
and Nutrition

## About you

- You are looking to build or regain strength, fitness &/or lose weight, but need some help to keep you on track?
- You like the idea of training on your own or as a group (4-8 people) or a combination?
- You are happy to train online (or face to face in line with relevant guidelines)



*DO SOMETHING  
TODAY THAT  
YOUR FUTURE  
SELF WILL  
THANK YOU FOR.*

## I offer

- Programme of online classes offering full balanced body workouts.
- Personalised 121 tailored training programmes
- 1-2-1 or small group options
- Free initial consultation
- Locations & times to suit you
- Fully Qualified L3 Personal Trainer
- Lots of support and encouragement



Book a free initial  
consultation

Hilary Spain 07909 833588  
email: [info@camomileconsulting.com](mailto:info@camomileconsulting.com)  
Facebook: Camomile PT  
Instagram: CamomilePT



**chicken/**  
**egg** free-range  
creativity

**READY TO HATCH  
NEW IDEAS**

BRAND STRATEGY | LOGO DESIGN | BROCHURES | VIDEO  
WEB DESIGN | WEB DEVELOPMENT | CONTENT CREATION  
ANIMATION | MARKETING STRATEGY | CAMPAIGN CREATIVE  
SOCIAL MEDIA ASSETS | COPYWRITING | MEDIA SUPPORT

**LET'S GET CRACKING**



[KAREN@CHICKENEGG.CO.UK](mailto:karen@chickenegg.co.uk)



07970 732057

[CHICKENEGG.CO.UK](http://CHICKENEGG.CO.UK)





Photograph courtesy Paul Goby

## Copy Date for August/September 2024 Gazette 15 July 2024

Is it really July? It has felt a lot more like early April and Pedro Chihuahua and I have been very pleased to sit by the fire in the evening! Enough said about the weather on to the bright and cheerful! **Classics on the Crick!** Congratulations to Mark Webster and his amazing team of volunteers for another fantastic display of classic vehicles, which I know will have raised another very welcome contribution for the Air Ambulance Service. I am looking forward to announcing the final total in the August/September Gazette.

Thank you to Jonathan Hilder for his Classic's report and photos, I couldn't resist the "cheerful chappies" photo as the front cover. Thank you, Neil Cockle, for the extra photos. Apologies gentlemen, I ran very short of space so not as many photos included as I would have liked to have fitted in. This edition has certainly been a "jigsaw puzzle" but hopefully everything has been included.

The Naphill and Walter's Ash Resident's article this month includes their thanks to Gloria LeFlaive who has retired after 40 years as their secretary. This is indeed a remarkable achievement and a fine example of community service. Gloria has always fought vehemently for the causes in which she believes, I am sure she will be missed. Congratulations Gloria, enjoy your retirement!

There are always, a plethora of different articles on a wide range of subjects, in every edition of the Gazette and this month is certainly no exception. Very occasionally, in collaboration with my deputy editor Jonathan, an article is refused, when this happens we will always explain our decision. If anything is omitted or added to an article, it is sent back to the contributor for approval. As always, my thanks to everybody for their contributions.

Last month I mentioned the Gazette annual subscriptions which I know our stalwart distribution team have been collecting. Thank you to them for all their work and thank you to everybody who has paid their subscription. If anybody has a problem with their subscription payment, please get in touch with [distribution@naphillandwaltersash.org.uk](mailto:distribution@naphillandwaltersash.org.uk) or give me a call.

The next edition of the Gazette is a combined edition, August/September, so please send September meeting notes and events to me on or before 15 July. I will extend the deadline by a few days to include school leavers events if necessary.

ENJOY JULY! Surely, we must finally get some summer sunshine!

Best wishes

Sonia



*Editorial Disclaimer: Although the editor has made every effort to ensure that the information in this magazine was correct at press time, the editor does not assume and hereby disclaims any liability to any party for any loss, damage, or disruption caused by errors or omissions, regardless of the cause. The content of any article is the responsibility of the contributor, if the text is edited/substantially altered, the editor will inform the contributor before publication. Any opinions expressed in articles herein do not express the personal opinion of the editor. Comments or queries on individual articles will be forwarded to the author/contributor to substantiate. The editor retains the right to refuse any contribution. No group or individual can demand that their contribution will be published or dictate how or where their contribution is placed or displayed. The editor will close comments on any subject if this is agreed by the Gazette committee member.*





## Professional, reliable plumbing & heating services

- Boiler Installations
- Full System Installs
- Vaillant Specialist
- Kamco 90 Powerflush
- Gas Work & Certification Vented Unvented Specialist Servicing
- Qualified & Insured



**Call us: 07557802907 / 07534340244**



**info@poseidonheating.co.uk**



**www.poseidonheating.co.uk**

**myBuilder.com**

**Checkatrade.com**

Now offering finance  
in partnership with

**kandoo**

**Vaillant**  
ADVANCE INSTALLER

**INTERGAS**  
SPECIALISTS

**GAS**  
**safe**  
REGISTER

## Mark Franklin Garden Services

Here  
to make your  
garden  
beautiful!

- \* Grass Cutting,
- \* Hedge trimming, \* Weeding,
- \* Turf Laying, \* Fencing,
- \* General garden/lawn maintenance

For regular maintenance  
contracts and all your one  
off garden jobs,  
**CALL TODAY FOR A FREE QUOTE!**

**Call Mark on: 0744 635 3179**

## HCS Furniture Ltd

01494 718070  
mark@hcsfurniture.co.uk



Specialists in bespoke fitted and free  
standing furniture, made to your  
specification, at affordable prices.

Our Products include:

- Wardrobes
- Kitchens
- Studies
- Dressing Tables
- Loft Spaces
- Media Units
- Bar Units
- Tables
- 3D Design

HCS Furniture Ltd  
The Woodwork Specialist  
Unit 7a Binders Industrial Estate  
Cryers Hill, Bucks, HP15 6LJ  
www.hcsfurniture.co.uk

Call or email now for your free quote



## Naphill Village Hall & Playing Fields Council Chairman's Report

Registered Charity No: 300309

[www.naphillvillagehall.org.uk](http://www.naphillvillagehall.org.uk)



### Chairman's Report

A committee meeting was held in the village hall on June 3rd. there were 11 trustees present. The playground was the main item discussed. We agreed to set a budget and continue to obtain quotes to update the playground. For major items we need to have 3 quotes and unfortunately the quotes are not exactly for the same items as the play units are made by different companies so we have to agree which quote gives us the right equipment and the best value. It was agreed that we would apply to Hughenden Parish Council for a grant towards the cost of this equipment.

Classics on the Crick was held on June 9th. And a good crowd attended. The bar was run by village hall/mens club and the profits on the bar went to the village hall. There is a possibility of an event being run on the crick in early September. More information in due course. The Fireworks event is on 2nd. November, the good weather has already been booked! On Sunday 1st.

December the village hall Christmas Fayre will be held at 1 o'clock with many stalls for Christmas present ideas.

The committee still urgently need a secretary for the village hall, at the moment we do not have one. The role would be to answer any emails with reference to the hall, compile the next meeting's agenda, there is a template for this and save any relevant documents to dropbox. If you think you could help please email me at [chairman@naphillvillagehall.org.uk](mailto:chairman@naphillvillagehall.org.uk). There is also a vacancy on the committee for somebody to oversee the maintenance of the village hall. This entails keeping the hall in good repair and liaising with various tradespeople to do the required work, probably an hour or so a week.

*Clive Lawrence*

Chairman Naphill Village Hall .

### Bradenham Parish Council

Due to flooding at the cricket club our May meetings had to be evacuated to St Botolph's church, an unusual setting for our Parish Council meetings. We were grateful to the church wardens for providing a location to hold our meetings that evening.

- Teif Jones was elected Chair and Paul Oborn was elected Vice-Chair for the forthcoming year at our Annual Parish Council meeting in May.
- Our Accounts have passed the internal audit and were signed off by the Council. All the year-end financial affairs were completed on time and submitted.
- We are asking our Buckinghamshire Councillors what is happening with the busses that serve our community.
- It was decided to purchase a new noticeboard for Bradenham Village as the continued costs of repairs is building up. The Walter's Ash noticeboard needs to be repainted.

We are continuing with reviewing our policies, we aim to look at four at each meeting.

Our second dog waste bin in Bradenham is being well used with no more overflowing of either of them.

The Parish Council was notified that there will be no village fete in 2024, but that there are plans for one in 2025. The Parish Council would like to be involved.

We have invited the National Trust to attend our next meeting to get some updates on their activities in the village. We have been asking the National Trust to improve the surface of the Bridleway up Bradenham Hill as this track is in a very bad way making it difficult for users.

Our Next meeting will be Monday 15 July @ 7pm at Bradenham Cricket Club.

*Deirdre Hansen,*

Clerk to the Council.

[clerkbradenhampc@gmail.com](mailto:clerkbradenhampc@gmail.com)



[www.e-voice.org.uk/bradenham-parish-council](http://www.e-voice.org.uk/bradenham-parish-council)







**yes you can**  
with Slimming World

If you would like to get healthier  
call Kerry on 07887 567264

**Tuesdays**  
Vibe Church Formerly  
Pastures Church  
209 The Pastures  
Downley Road  
HP13 5RR  
5.30pm & 7.00pm

**Thursdays**  
Hughenden Valley Village Hall  
(Small Hall)  
Coombe Lane  
Hughenden Valley  
HP14 4NX  
5.15pm & 6.45pm

[slimmingworld.co.uk](http://slimmingworld.co.uk) *Everyone gets a warm welcome*




**FRASER-MORGAN  
SCHOOL OF DANCING**



\*\*\*\*\* Naphill Village Hall \*\*\*\*\*

**RAD BALLET** for ages 3+

ROYAL ACADEMY OF DANCE  
**DANCE**  
REGISTERED TEACHER

For more information please contact:  
**01494 816539**  
**07974 121081**



**paint ability**  
Decoration Specialists  
\*Professional \*Competent \*Experienced

Established since 1973

**07785 225 675**  
**01494 257 482**  
[www.paint-ability.co.uk](http://www.paint-ability.co.uk)

**AIRS HOUSE**  
PRINCES RISBOROUGH

for  
**QUALITY CARPETS, TILES,  
VINYL & WOOD FLOORING**

**01844 342546**

Station Parade, Summerleys Road, Princes Risborough  
E-mail [sales@airshouse.co.uk](mailto:sales@airshouse.co.uk)


**BUCKS AERIALS**  
TV & FM SATELLITE SYSTEMS  
DOMESTIC & COMMERCIAL

- TV & FM AERIALS & SATELLITES INSTALLED
- EXTRA TV POINTS
- HARD WIRED INTERNET POINTS
- SATELLITE LINK-UPS INCLUDING SKY
- ALL AERIALS ELECTRONICALLY ALIGNED
- SERVICE AND MAINTENANCE FULLY INSURED
- FREE SURVEY & QUOTATION
- ALL WORK GUARANTEED
- UNRIVALLED AFTER-SALES SERVICE

*Special Rates for OAP*

**Telephone: 01494 441319**  
**mob: 07932523741**

*Bucks Aerials is a full member of the R.D.I.  
A registered digital installer*



**PROPERTY  
ELECTRICAL  
SERVICES**

*Domestic and Commercial Installations*

**Local Electrical Contractor**

- *Rewires*
- *Extensions*
- *Heating systems*
- *Test and inspections*
- *Maintenance*

Part P installer to the  
new 17th edition  
electrical regulations

**ELECSA**  
Part of the ECA Group  
Part P  
Approved Contractor  
[www.elecsa.co.uk](http://www.elecsa.co.uk)

**Tel: 07786803701 or 01494 636311**  
Email: [info@propertyelectrical.co.uk](mailto:info@propertyelectrical.co.uk)





## Parish Council News

**HPC Allotment Working Group** - Inaugural meeting was held on 10 June 2024 attended by 5 of the 8 Allotment Representatives and 4 Councillors. Many good ideas were shared about improving the experience for all tenants, including improving bio-diversity, which the group will be working on. The next meeting is on 9 September 2024.

**Grant Applications** - HPC is keen to receive Grant applications from community Groups. Please see the website for the Policy and Application Form.

**Councillor Vacancy** - We would be delighted to hear from anyone interested in becoming a Councillor for the Naphill and Walter's Ash ward, where we have 3 vacancies.

**Community Ragwort Pulling Event** - The Parish Council are sponsoring a community ragwort pulling event at Little Burnham Meadow, next to the allotments above Hughenden Valley Village Hall on **Thursday July 11th, from 10am to 1pm**. The event will be led by the Chiltern Rangers and their Green Thursdays volunteer group. There will be other conservation tasks available around the meadow and spinney for those who don't fancy

pulling ragwort all day. If you'd like to join us, please bring good rubber gloves, as the ragwort is strongly alkaline. If you have your own specialised ragwort fork, please bring it along.

The objective is to make the grass that is cut later in the summer usable for livestock. This, in turn, means we can remove the cuttings, which promotes greater diversity of wildflowers and insects in the meadow. This is part of our broader plan to promote greater sustainability and biodiversity on the land the Parish Council owns or manages.

Please join us whether for an hour or the full session. Please meet John Moorby in the Village Hall Car Park at 10am and he will lead you to the Meadow. We've had great turnouts at recent events at Cockpit Hole, in Great Kingshill, and we'd love to see members of the local community join us on July 11th. This will make an immediate positive difference to one of our most ecologically valuable locations.

*Stan Jones*

Chairman Hughenden Parish Council

[www.hughenden-pc.gov.uk](http://www.hughenden-pc.gov.uk)





**CHILTERN  
RANGERS**

**Community Ragwort Pulling Event**  
**Little Burnham Meadow,**  
**Hughenden,**  
**Thursday 11 July, 10am**



**HUGHENDEN  
PARISH COUNCIL**





Chiltern Hills  
Arboriculture

**All Aspects of Tree Surgery / Hedge Cutting**  
**Commercial Sites / Domestic Gardens Estate**  
**Maintenance / Tree Surveys**  
**Full Public Liability Insurance**

07555 831391 / [danny@chilternabor.co.uk](mailto:danny@chilternabor.co.uk)

[www.chilternabor.co.uk](http://www.chilternabor.co.uk)



**Lawnmaster®**  
professional lawn care



Certificate Number 8502  
ENR 1001  
/50 14001



ASK FOR A  
**FREE**  
LAWN  
ANALYSIS

Beautiful  
lawns at  
affordable  
prices!

**Your lawn, our  
expertise... *perfect!***

The only National Lawn Treatment Company in  
the UK to employ qualified Greenkeepers

Call for a **FREE** no obligation quotation

**0800 326 5017** [www.lawnmaster.co.uk](http://www.lawnmaster.co.uk)   

Or just text 'lawn' and your postcode to 60777 and we will call you.

SEE RESULTS IN JUST  
**10 DAYS**



# Friends of Naphill Common

Despite it now being Summer our Common is still very wet in places. Hopefully it will dry out soon and we can all enjoy walking around our beautiful Common without having to avoid the mud.

On the 16th July the Royal Air Force Benevolent Fund Defence Infrastructure Organisation are as part of their wish to support conservation work sending a team of approximately twelve to help us with our work on the common. We are sure they will make a significant contribution on the day. We intend to use them to spread wood chippings along the muddy areas of the Ladies Mile from Chapel Lane towards Forge Road and to remove more holly. We are most grateful to the RAF for their support.



The Thursday morning work party is continuing to remove holly adjacent to the Ladies Mile towards the Downley Road end of it. They have undertaken their first flail cut of the open grassed area nearby where they are working and further along the Ladies Mile towards Forge Road.



The Tuesday work part has been working near The Clumps to remove holly. By the time you read this it is hoped the flail will have been put to good use on The Clumps to cut down the bracken which seems to come back stronger every year. Now we have use of the flail we can cut the bracken twice a year which will weaken it and hopefully in 3 to 4 years it will be no more – fingers crossed.



The hard work of the members of the work parties has been rewarded with a wonderful display of bluebells within the grassed area and we now have a beautiful display of foxgloves within the wooded areas that have been cleared of holly.

As always, we welcome new recruits to our working parties. Tools are provided and there is plenty of good social interaction. Why not come and give it a try. For Tuesday morning working parties contact Peter Davis on 01494569303 or for a Thursday morning contact Ron Collins tel. 01494 562240 or 07748255023.

The long and short walk continue every month and are both well supported.

Check out our website for more information about work parties and walks.

*Peter Davis*

Webmaster & Work Parties

<http://naphillcommon.org.uk>





# MOBILE FISH AND CHIP VAN

**SERVING:**  
LACEY GREEN  
WALTERS ASH  
NAPHILL

EVERY SATURDAY  
3.30PM TILL 7.30PM

ONLINE TRACKER  
AVAILABLE

HOME DELIVERY  
AVAILABLE WHERE  
POSSIBLE

**27**

DIFFERENT STOPS  
FULL ROAD LIST ON  
FACEBOOK  
FACEBOOK.COM/  
MOBILECHIPPY

**07376395678**



**HAVING THE FAMILY OVER?**  
WHY NOT PRE-ORDER LARGE ORDERS TO  
AVOID WAITING

**RJ**  
**RJM GAS**  
**SERVICES**

**RJM GAS SERVICES**

Local Plumbing  
and Heating  
Gas Engineer

Gas Safe Registered 579347

## SERVICES:

- \* Boiler Service, Breakdown and Repairs
- \* All Boiler and Heating Installation
- \* System Powerflush
- \* All Plumbing Repairs and Installation Big or Small
- \* Bathroom Installations

**Call Ralph**

**07792 651 399**

@ rjm-gasservices@hotmail.com

**safe**

579347

*Shear Madness*  
Your Local Barber



**Mandy Dearden**

Appointments only

Tel: gents - 07843 100 574

girls - 01494 563006

Email: s.madness@yahoo.co.uk

Open: Mon-Fri 9.30am - 5pm

Saturday 8.30am-1pm

CLOSED Thursday

245 Main Road, Walter's Ash, HP14 4TH

## Naphill & Walter's Ash Resident's Association



The highlight of last month was our AGM held in the village hall. It was attended by thirty three residents, and we were pleased to welcome numerous well known village figures to the meeting and the social evening that followed. It was also an opportunity to say farewell to Gloria Leflaive after four decades as the Association's Hon Sec. She has been a tireless and doughty worker on behalf of the villages and her contribution will be sadly missed. We presented Gloria with a vase and Susan Bickerstaffe had made a special farewell card reflecting Gloria's interest in the countryside.



We shall be thinking about how we distribute Gloria's work amongst the remaining members of the committee at **our next meeting – 19:30 on 8th July in the village hall.** Meetings are open to all residents so do come and join us.

Best wishes

*David Frost*

Vice Chairman



## Teamwork

We are fortunate to have so many local volunteer-led groups in Hughenden. All make a unique contribution to the fabric of our community. Some are based on issues such as the environment; others have a faith-based focus or have a wider interest. What is encouraging is the way that many have come together to share ideas and information. This is a key priority for Hughenden Street Association. In partnership with local groups the Association's weekly e-newsletter provides tailored information from them. In turn they promote the work of the Association's volunteers. Definitely a 'win-win'.

It is timely to celebrate this teamwork as without it the Hughenden groups would be all the poorer. As volunteers giving your time is the most precious asset and it is always good to feel that what you are doing is making a difference. Spreading the word without a budget, can be a challenge. If you are part of a local interest group and

would like to promote its activities, then why not let us know? Hughenden Street Association is keen to support like-minded community groups. Our weekly e-newsletter is sent to about 100 people and is shared by residents associations and other local groups creating a much wider reach. Copy deadline is each Wednesday and articles are typically no longer than 300 words. Don't worry the Editor can make sure your article hits this target and still conveys its message! An image is always useful as this helps draw the reader to the article. Send your article to: [hughendensa@gmail.com](mailto:hughendensa@gmail.com)

You can find us on Facebook: <https://bit.ly/2PNqQfg>

*Hilda*

Hilda Stearn CF CIPD

Communications Coordinator

Hughenden Street Association





Judith Tardif  
Osteopathy

Clinic: 2 Oakeshott Avenue  
Naphill, High Wycombe  
HP14 4QL Bucks

Appointments: 07796343789



## Massage with Pamela

### In need of a massage?

Sports, or Remedial - for bad back, necks and shoulders.

Deep Tissue, NMT, PNF,

or just for **Pure relaxation**

Treatment Room in Naphill

Call Pamela to book your apt now, 07759 831706

Home visits possible

Pamela Wilson Massage Therapist + Pilates/Yoga Instructor

[www.chilternmassagematters.co.uk](http://www.chilternmassagematters.co.uk)

*Please do read the very complimentary testimonials*



# The Window Doctor

**CARE & REPAIR FOR ALL YOUR  
UPVC & ALUMINIUM WINDOW  
& DOOR PROBLEMS**

- Replacement of broken down sealed units  
- misting up inside glass
- Adjust front & back doors that do not shut
- New handles, hinges and door locks
- Replacement of patio door wheels
- New security handles with keys
- New door panels and cat flaps
- New Georgian style or leaded style sealed units
- All insurance work • Burglary damage • Servicing

**PLUS INSTALLATIONS OF NEW UPVC WINDOWS & DOORS**



Call us for a **FREE** Survey and Quotation,

**No call out charge**



Friendly Family Established Business

**Cowling & Co.**

**Tel: 01865 891776  
Mob: 07860 435742**

[www.windowdoctor.co.uk](http://www.windowdoctor.co.uk)

email: [cowlingandcothewindowdoctor@gmail.com](mailto:cowlingandcothewindowdoctor@gmail.com)



## Reducing loneliness and vulnerability is key to crime prevention work.

At Neighbourhood Watch we like to provide you with information about reducing the opportunity for crime to happen, but how about if we could look at the causes that would reduce the possibility of people committing or becoming the victim of the crime in the first place.

For example, it is a well-known fact that by reducing the risk to individuals, we can make them more resilient.

Loneliness is an emotional response to isolation or lack of meaningful companionship. It is widespread and it affects people of all ages, but is often triggered by certain life events such as bereavement, divorce, retirement or declining health; young people can also feel isolated and in need of connection.

Loneliness can also increase older people's risk to falling victim to scams, as the prospect of making conversation with another person can make them more willing to open the door to a stranger, or engage in a phone conversation with an unknown caller, or respond to emails or letters.

Professional scammers are skilled at developing relationships with their targets, and before long the lonely householder begins to feel that a genuine relationship is building.

This can make it very hard to convince the person that they are being scammed. Lonely people also have fewer opportunities to meet with others and discuss finances and to explore with someone

they trust whether an offer or relationship is genuine.

People who are socially isolated are, by definition, hard to reach and identify. Another problem is that loneliness is largely stigmatised, so people are less willing to self-identify as being lonely.

Consider visiting neighbours who might be lonely and unable to move, even if it's just for a brief chat. Your company can make a significant difference in their day.

Loneliness is deeply personal and different for everyone. What helps one person might not be effective for another. If you notice someone who seems lonely, try starting a conversation with them to understand what would be beneficial, and then offer your support in achieving it.

Some people might need help boosting their self-confidence, others might require assistance with mobility, and some may need financial support to engage in social activities.

Taking the time to reach out can help build a stronger, more caring community for everyone!

Email: [office@wdnhwatch.plus.com](mailto:office@wdnhwatch.plus.com)

Facebook: @wycombenhw

Instagram: @wycombenhw

Website: <https://neighbourhoodwatchwycombe.org/>







## Carpet & Upholstery Cleaning Specialists

**Why You Should Choose Us ..**

- Thorough Cleaning & Outstanding Service
- State of the Art Truckmounted Cleaning System
- Most Carpets Dry within 2 hours
- Fully Insured
- Free On-Site Quotations
- Carpet Stainguard with Dustmite & Allergy Control
- Spot, Stain and Odour Removal

**PRO CARE** 07798 742835  
 Carpet & Upholstery 01494 489804  
 Cleaning Services www.procarecarpetcleaning.co.uk

SAFE FOR PETS

SAFE FOR BABIES

SAFE FOR WOOL

SAFE FOR ALLERGY SUFFERERS

## HOME TECHNOLOGY HELP

- Mobile phone, tablet, PC, laptop upgrades
- PC, laptop faulty or running slowly
- Printer setup, configuration, diagnostics
- Wi-Fi/Bluetooth network troubleshooting
- Smart TV setup, Sky system upgrade advice
- Small business system upgrades/refresh

Call Dave in Lacey Green on  
**07831 775142**  
**NO FIX – NO FEE**



## Mick Smith Carpets

Quality Floor Coverings

Carpet ♦ Vinyl ♦ Laminate ♦ Luxury Vinyl Tile

Quality brand name products from trusted names, supplied and expertly fitted, from your local carpet and flooring specialist.

Free estimates advice and home sample service.  
 All with great customer service.  
 To suit all requirements, taste and budgets.

For more info and references visit  
**micksmithcarpets.com**  
**01494 528847**






Fitting only service also available  
*Serving homes in the area for 30 years*



Do you have pests causing damage or sleepless nights?

Rats, Glis Glis, Mice, Wasps, Moles, Fleas, Moths, Pigeons, Insects, etc.

Domestic, commercial, one off treatments and service contracts.

**07889 624647**  
**Tomcolespestguard@gmail.com**

## BUTCHERS - TIMPSONS -

We are a small catering butcher who visit the market daily to ensure we supply high quality, fresh produce and try to source locally where possible.

We also offer a range of fresh meat, eggs, cheese, bread and cakes.

**Our shop is open**  
**Tuesday – Saturday from 9am until 4pm**  
 Unit 6, Ministry Wharf, Saunderton HP14 3XA

We also offer **FREE** local delivery! 

[www.timpsonssmallholding.co.uk](http://www.timpsonssmallholding.co.uk)



## Naphill Neighbours

---

At our June meeting we were treated to a lovely afternoon of singing by Elen Wayne, a very talented Welsh singer. Elen's first language is Welsh and she began her repertoire with a Welsh folk song and followed it with other songs we were unfamiliar with but also songs from 'Beauty and the Beast', 'The King and I' and 'The Sound of Music', the sort of songs we all tend to sing to ourselves when we have seen the show. Throughout is all she interwove chapters of her singing career which began at the age of 4.

Elen is Principal of the Chiltern Music Academy, a charity that inspires and develops young musicians, and is the creator and founder of the Wellbeing Music Lounge that uses the power of music and rhythm to promote balance, wellbeing and a healthy mind. Elen encouraged us to attend one of the Chiltern Academy's concerts to hear the music of the talented young people we have among

us. We hope that we will be able to enjoy more of Elen's singing at one of our future monthly meetings.

***Looking ahead beyond the summer months, we have a trip to Worcester planned for Friday, 20th September, which will leave the Village Hall at 9.00 am, with an extra stop at Forge Road at 9.05 am: at the end of the day we will leave Worcester at 4.00 pm. The cost of this trip is £26 and we do still have spaces available: if you are interested in joining us please contact Yvonne Cook on 01494 563960.***

The speaker at our meeting on Monday, 8th July, is Richard Anderson who will give us a talk on 'Eva Braun, Hitler and his Mistress'. We welcome guests so do come along if you are interested in this talk and join our regular members. Until then, take care.

*Yvonne Cook*



---

## Not from the Vicarage

The month of July sees our thoughts turn towards packing our bags and heading off to sunnier climes or to the coast. Before the advent of package holidays, the great British seaside summer holiday was our main holiday. For those living in smoky industrial towns, the chance to breathe fresh sea air and indulge in the delights of the seaside was a huge release. As travel got easier, more and more flocked to the coast with communities springing up to cater for the needs of this annual influx of people. For a few months every year, our coastal towns and beaches became playgrounds.

Not everyone, however, was there to have fun or ensure others had fun. The sea that provided so many with fun also hosted a massive industry that gave many, many more livelihoods and trade. Hence, it is in July that many churches celebrate 'Sea Sunday'. It is the Sunday in the church's year that we acknowledge the debt we owe to those who work for us on the seas and remind ourselves of the importance of the sea to our lives.

My husband's previous parish never celebrated Sea Sunday as they were a very long way from the sea, therefore saw it as irrelevant to them. Duh! We are an island nation, surrounded by briny. We are totally bound up with the sea and owe it everything – from the Nordic raiders who crossed the North Sea to those of the Windrush who crossed an ocean to help rebuild Britain after the war. It provided a natural barrier against Hitler and his ground troops. Fish and chips is often seen as our national dish, along with roast beef (which is often Irish beef or New Zealand lamb). Our climate and weather are moderated

by the sea. As a nation, we cannot survive without our imports and 90% of our imported goods come across the sea – that's exotic fruits, cars, clothing, pharmaceuticals or cheap electronics. Think about breakfast without orange juice or smashed avocados on sourdough.....! Next time you are shopping, have a close look at where something has been manufactured – chances are, it's been 'shipped'.

Although there are strict rules and regulations regarding the welfare of seafarers, their life is quite simply, dangerous. The most obvious hazard is shipwreck, but piracy remains a threat as does trafficking and slavery. Now add war to that list, as we have recently seen Houthi rebels shelling vessels in the Red Sea. The carrying of cargo is a cutthroat business and ships are often run to the limits of their seaworthiness to maximise profits, so conditions can be poor. Sea farers can be away from home for many months. Female seafarers may also have to deal with ethnic and cultural misogyny. Add to this what Nicholas Montserrat called the 'Cruel Sea'. All so we have our 'avo on sourdough'.

Jesus spent a lot of time around boats and knew well the dangers and difficulties this community faced. Let us briefly pause as we head towards the seaside and be thankful to those who take great risks to make our holidays and way of life possible.

May you be blessed with rest as this holiday season begins.

*Rev Jenny Ellis*





*Your Local Independent Estate Agent*

Work personally with **James Donald**, our Partner & Head of Sales

07949 890190 - jamesdonald@houseshaw.co.uk - your Area Specialist for Naphill & Walters Ash

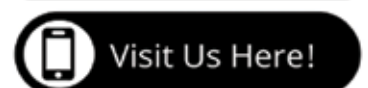
## DO YOU NEED TO REMORTGAGE IN THE NEXT 6 MONTHS?

We are based in Downley and offer free residential mortgage advice as well as virtual, telephone or face to face appointments in the comfort of your own home.

Call us today on 01494 211194.



  
**Applicant  
Mortgage  
Brokers**



YOUR HOME MAY BE REPOSSESSED IF YOU DO NOT KEEP UP  
TO DATE WITH REPAYMENTS ON A MORTGAGE OR OTHER  
DEBT SECURED ON IT.



## Sporting Achievements at NNAS!



During the course of the year, children in both KS1 and KS2 have proudly attended and hosted many different sporting events.

A few weeks ago, some Y1/2 pupils participated in a football tournament which they thoroughly enjoyed, coming second. In one of the matches, they scored five goals and they were very pleased with the results of the tournament.

Further up the school, the Y5/6 girls played football against four other schools in a tournament, which included several face-plants and a tooth falling out! The girls' team from one competing school had never before been beaten... but our talented squad overpowered them!! Not only did we win the tournament, but we also won the league!! Miss Gwynn was overjoyed!!!

Onto rounders: at a tournament hosted by our school, fifteen courageous Y6 students set out on a mission to bring home gold in the rounders tournament. St Johns School and Bledlow Ridge

School travelled to Naphill to compete against us in 3 different games of rounders. Bledlow Ridge proved difficult; one pupil was especially skilled in catching the ball, but after a long afternoon of playing some very exciting matches, our Y6 team came home with the gold medal!

Not to be out-done, the Year 4's placed an impressive 1st in their own exhilarating rounders tournament; playing against several other schools, all of which showed brilliant enthusiasm and great sportsmanship! The other schools were not easily beaten and were clearly passionate about their sport! All of our team really enjoyed the experience and said it was great fun, coming back with comments like, "I would absolutely do it again!"

Maybe it'll be some of us competing in the Euros and the Olympics of the future!!



## Shear Madness

Schools out for summer, what summer?? Gosh the weather has been appalling! Let's hope it cheers up soon, in the meantime stay warm.

We've got the heating on at home and we've had one BBQ in the rain.

Good luck to our year 6 who are in their last year at primary school.

Enjoy the holidays whatever they bring, remember you're making memories for the future whatever you do even if it's a picnic at the crick in the rain. You'll be laughing at that for years to come, I know I do with my parents and also my grown-up son. It's all about what you do, not where you go, they just want your undivided attention. Have a great summer whatever you do.

Love as always

*Mandyxx*





## BUCKS NEWEST FARM PARK

Tickets  
from just

**£3.50**

Free for under 2's

### HAVE YOU VISITED YET?



**A LOVELY TRIP OUT FOR ALL THE FAMILY**

**GREAT FOR LITTLE LEGS  
LOVELY FRIENDLY ANIMALS**

**FREE PICNIC AREA  
BASED IN LACEY GREEN**

For more information visit us online [www.widmerfarmpark.co.uk](http://www.widmerfarmpark.co.uk)

Find us on Facebook & Instagram

Widmer Farm Park is located at Widmer Feeds Country Store, Pink Road, Lacey Green, Bucks, HP27 0PG



**The Cat Butler®**  
Cats are happier at home



**Over 700  
5\* reviews!**

## **Going away this Summer?**

Trust The Cat Butler, the sitting service  
that's **exclusively for cats!**

- ✓ Feline friendly cattery alternative
- ✓ Affordable daily home visits
- ✓ Free home care & security service
- ✓ Fully vetted and insured

**Give us a call and let us pamper your feline friends  
in the familiar surroundings of their own home.**

📞 01844 213961 ✉ [thame@thecatbutler.co.uk](mailto:thame@thecatbutler.co.uk)

Visit us at [www.thecatbutler.co.uk](http://www.thecatbutler.co.uk)



## Gordon the Birdman

As we reach halfway through the year and temperatures still only in the mid-teens, my thoughts and reflections increasingly return to the book written by Rachael Carson, printed now over sixty years ago. She then predicted that a population explosion with a corresponding urbanisation of the countryside, coupled with increasing use of agro-chemicals in the search for ever increasing yields, will in time result in the collapse of the invertebrate eco-system, which in turn will affect the whole of the natural world. This was at a time when climate change was not even a speck on the horizon.

Each year I take two dawn walks each of 2½ - 3 hours starting at 4am, one from home in the last week of April, the other from Bledlow in the first week of May. Increasingly, over the past few years the dawn chorus has become not the full orchestra and chorus of a Verdi opera but more akin to Schubert quintet.

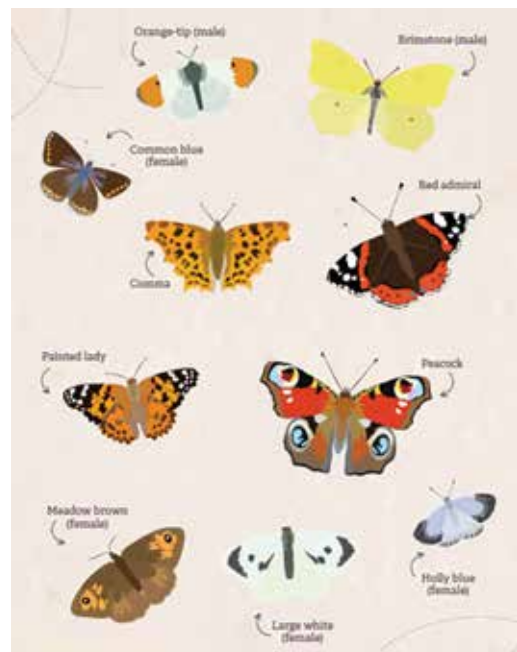
Below is a chart of butterflies seen between the 1st of April and the 31st of May. Not a total of butterflies seen but the number of days each species was seen in the garden over that 61 day period.

### Year 2000

Brimstone	37
Orange Tip	24
Holly Blue	18
Common Blue	5
Tortoiseshell	17
Red Admiral	19
Peacock	11
Large White	14
Small White	9
Green Veined White	4
Speckled Wood	12
Comma	12
Small Copper	4
Painted Lady	5

### Year 2024

16
3
6
0
0
3
1
5
0
1
0
0
0
0



On a brighter note, a Cuckoo was recorded on two occasions, on 27th and 30th April, both times just before 6pm. The other being a Lesser Spotted Woodpecker heard on the 7th May, both birds in the area around Dew Pond.

The drumming of the Lesser Spotted Woodpecker lasts slightly longer, 1.5 seconds, also slower and more delicate than the Greater Spotted Woodpecker which is very fast, stronger and usually lasts less than a second.

*Gordon*







## RAF High Wycombe News and Events



### *"Never in a million years did we think we would ever come back."*

It was a real trip down memory lane as lifelong friends Jenny Parker & Pat Toohie made an emotional return to RAF High Wycombe after fifty-nine years to relive the memories they had shared as teenagers.

Since the age of thirteen Jenny had wanted to join the RAF. In 1965 at aged eighteen, Jenny was granted her wish. She left the tight knit village of Hathersage in the Derbyshire Dales - *"I felt independent with new adventures ahead!"* said the former stewardess - and signed up as an Aircrafts Woman (ACW) before attending RAF Spitalgate (now an Army barracks) in Lincolnshire for basic training. "Depending on the trade you chose determined where you were sent after that. I wanted the Nursing Corps but my education was not good enough," said Jenny. *"At the time they were desperate for stewards and stewardesses, so that is what I became....we were glorified waitresses, really,"* laughed Jenny. An eight-week intensive course at a catering school in Hereford followed where you were taught everything from laying a table correctly to dining etiquette. Her first posting was RAF High Wycombe.

Cambridgeshire based Jenny and Birmingham based Pat both decided to rekindle memories of a site that held so many happy experiences. *"It was like coming home,"* said an emotional Jenny as they entered the Officer's Mess on 2 Site. A clearly emotional Jenny was in tears, overwhelmed by the flood of memories that the Mess brought back. *"I can't breathe....I am just so emotional. It is like my heart has been ripped out. I am so happy,"* cried Jenny. The Main Hall of the Mess had not changed according to the plucky duo, except the tables were smaller. *"The soul is still here in a way,"* reflected Pat.

*"I can't believe I am here. It really is going to be like a dream when I get home."* (Jenny)

RAF High Wycombe veteran and former mess manager, Dave Brown was on hand to ladle out the banter and share memories of times long ago including dining in nights and shenanigans in the kitchens. *"No matter who passed you, you had to stand to attention. It was a very strict time!"* Pat, who served for a year in the Air Force before marrying a fellow steward summed up her time at High Wycombe; *"There were so many laughs, that's all I remember from my time in the Air force! It put you in good stead for life. The camaraderie was amazing. We always looked after each other's backs, and you had to mature very fast back then."*

Jenny has fond recollections of being the only person from RAF High Wycombe to be selected one year to go to the Queen Mother's Garden Party and to the Prime Minister's country home, Chequers where incumbent Prime Minister, Harold Wilson was entertaining a delegation from India. *"I had to iron a beautiful sari for one of the ladies,"* said Jenny, laughing. The happy-go-lucky former stewardess who spent much of her later career in the property industry, recalls the time she was demobbed in 1969; *"I was hoisted into a sink in the kitchen and covered in flour. The staff threw all sorts of stuff at me, then they hosed me down with a hose pipe!"* Pat was demobbed in 1967.

*"My eighteen-year-old self is stood next to me. She is walking with me all the time I am here."* (Jenny)

After some photographs were taken and new memories made, the ladies were given a cheery farewell.

*Laurence Parker, MCO.*







Another busy month for Naphill and Hughenden Scout Group, which saw the Young People spending some nights out camping. Our Sixers and Seconders (the Young People selected for leadership roles) spent 2 nights camping out at the Speen Scout Hut, whilst our Adult Leaders earned their 'nights away'. If that doesn't sound enough, they hiked 15 km before they even got to their overnight location.

During their evening sessions the Cubs engaged in some mini-pioneering and den building activities on Naphill Common.



*If you would like to support the Group by volunteering some of your time, we are always ready to welcome people who can help in anyway, not just running sessions (for example, helping with administration or communications). Please contact the Group's Lead Volunteer (Hamish Pearson) by email at: [groupleader@naphillscouts.org.uk](mailto:groupleader@naphillscouts.org.uk)*

## Classics on the Crick 2024



**PLANET WHEELS**  
01494 564444

*Congratulations to the  
Classics Team*

*Photographs courtesy  
Neil Cockle*





## A Great Day at Classics on the Crick!

Summer has arrived and it is time for Classics on the Crick! Unfortunately this year was considerably cooler than last year, but this did not stop the crowds from coming out in their thousands. This event is always so well managed by a dedicated team of volunteers who ensure that the cars get in and parked safely for everyone's enjoyment. What I love is just how friendly everyone is at the event happy to discuss cars, food, music and even the weather. There were so many children there being introduced to the world of classic cars, it was a delight.

A great selection of trade stands and food stalls were gathered to give us great choices in what to eat and drink and spend our money on. The volunteers were again fabulous coming out to help set up and manage the parking and sorting out the gate and all the other areas that need to be managed on an event of this size.

Please, if you enjoyed this day out and would like to get involved, the team would really welcome your help as

without volunteers this event will not happen. So why not make a difference and email the team today offering your help on [classicsonthecrick@gmail.com](mailto:classicsonthecrick@gmail.com).

I would like to thank everyone who put so much hard work into the event, to set it up, run it and take it down, to the trade and food stands, the bar and Bon Ami, the musicians and all of you for turning up and making it a great day.

The best bit is that this event will raise a large sum of money for the Air Ambulance that can be needed by anyone of us at any time. Thank you!

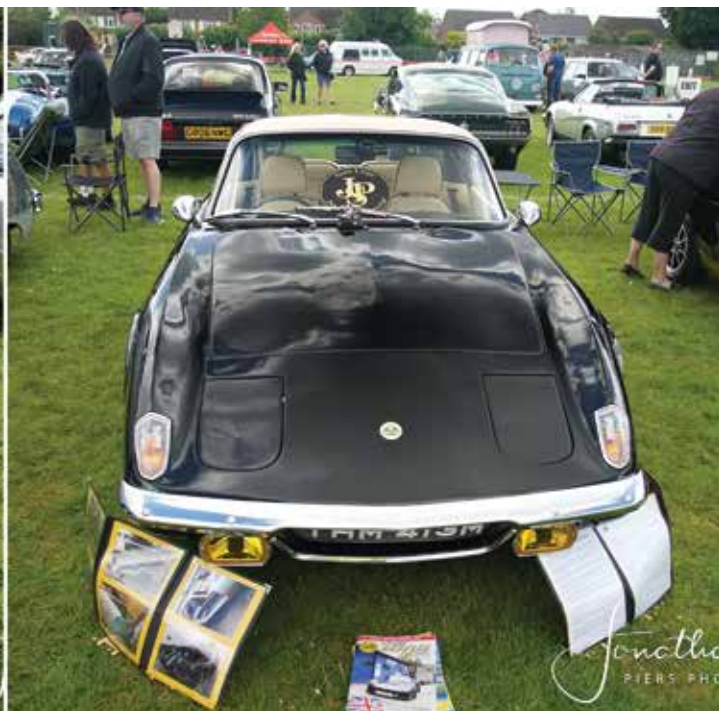
*Jonathan P Hilder*

[www.piersphoto.com](http://www.piersphoto.com)

07787 505786







## Classics on the Crick

Sunday 9th June 2024

Sunday 9th of June was another fantastic celebration of motoring at the Crick as hundreds of Classics Cars and Bikes went on display. As usual we saw everything from Minis to Rolls Royce's and Fiats to Ferraris as part of the 10th year of Classics on the Crick.

Despite the awful summer we are having, we were blessed with a completely dry day. Whilst we all wished it had been a few degrees hotter, it did not deter thousands of visitors.

Car of the Show went to Mr Mark Thomson with his fabulous bright red BMW 3.CSL. The Best Bike picked by our judges was a very rare Brough Superior belonging to Andy Newgill. Visitors to the show can also vote for their favourite, and this year they picked a striking Black and Gold Lotus Elan Coupe owned by Mr Tony Wood.

During the day, we had some great live music. In the morning, we started off with the Skavengers duo who played several ska, mod and 2 tone favourites. The afternoon finished with a very popular set from Steve Ling who had a good proportion of the bar's customers singing along!

A massive thanks goes out to all the people and organisations who help make the event run so successfully.

- Firstly, our volunteer marshals who this year came from far and wide, and as usual worked tirelessly parking and directing all those cars and bikes.

- Chiltern Vale Scout Group, who managed the public parking field.
- The Horses Trust for the kind use of their Stocking Lane field.
- Naphill Village Hall for allowing us to use the playing field and facilities, plus also for providing their excellent bar.
- Sytner High Wycombe BMW and MINI for their continued sponsorship

All profits from the show go to the Thames Valley Air Ambulance. Whilst we are still working out the final total, we can confirm that we have now comfortably broken through the £100,000 barrier for lifetime contributions to this excellent cause.

We hope to be able to report on details of the cheque presentation in the next edition of the Gazette.

### *The Classics on the Crick Team*

[classicsonthecrick@gmail.com](mailto:classicsonthecrick@gmail.com)

PROUDLY SUPPORTING







**yes you can** with Slimming World

If you would like to get healthier call Kerry on 07887 567264

<b>Tuesdays</b> <b>Vibe Church Formerly Pastures Church</b> 209 The Pastures Downley Road HP13 5RR 5.30pm & 7.00pm	<b>Thursdays</b> <b>Hughenden Valley Village Hall (Small Hall)</b> Coombe Lane Hughenden Valley HP14 4NX 5.15pm & 6.45pm
---	---

**slimmingworld.co.uk** *Everyone gets a warm welcome*

## A Slimming World Success Story

As your local Slimming World consultant, I really wanted to share this amazing success story. This is one of my proudest moments since becoming a consultant in 2019.

Jan, a member of my Hughenden Valley group, joined the group in Sept 22 on a GP referral and has recently reached her Personal Achievement Target. (see photos below)

Jan reached her dream target weight on 23rd May. It was such a lovely moment and there were tears of joy. Just a week before she received her 8 stone award, she then lost another 3lb to get to her target. That's an 8 stone 3lbs weight loss!

Since Jan has been a target member, I have seen her confidence grow. Jan still attends group every week and still gets lots of support to maintain her target weight. Jan has become more active and has set up a walking group for members of both my Downley & Hughenden groups.

Jan also was also our Woman of the Year in 2023 & was our Greatest Loser for 2024. Jan loves that the eating plan can be followed without needing to feel hungry or deprived. She still enjoys treats, whilst still sticking to plan. Jan says "I love the support I get from my consultant (Kerry) and the group. We really support each other on our own and each other's journey to reaching target".

My groups meet as follows:

Tuesday at The Vibe Church Downley - 5.30pm & 7pm

Thursday at Hughenden Valley Village (small) Hall - 5.15pm & 6.45pm

If you would like to find out more about my warm, friendly & supportive groups please do not hesitate to contact me.

*Kerry*

07887 567264







I wonder how many of the local inhabitants of Naphill who perhaps caught the first bus into Wycombe on workdays, can remember hearing a Concertina being played from the back seat? The player was Charlie Ede. Where he boarded the bus I have no idea, but I learned that he lived in a thatched cottage at Green Hailey. I got to know him as a boy starting work at a furniture factory in High Wycombe. I was there for some seven years as an apprentice draughtsman come designer. I came to admire the range of skills that the workers had the cabinet makers, chairmakers, wood machinists, polishers, upholsterers skills that gave them status that now seems missing from many occupations. What I most remember with pleasure now, is the social atmosphere that we worked within the interaction between a diverse bunch of all ages; the comradery, the banter and the humour that filled their day, alongside their work. One that contributed to the humour was Charlie.

Charlie was the storekeeper and general handyman and would supply everyone with the materials they needed not always in the way they wanted. He once replaced all the toilet paper in the gents with sandpaper. On another occasion he went into the toilets and found none of the cubicles in use. He swiftly put his hand over the cubicle doors and bolted them in turn. He then stood back rocking up and down as if waiting to use one. He soon had

something of a queue behind him, when he announced he could not wait any longer and left.

I used to join a number of others in the canteen to eat my sandwiches at lunch time and chuckle at the goings on. Charlie had a particular sparring partner, one Harold Trunder. Both would heckle the other. I recall Harold, having finished his lunch, sitting behind a large newspaper and Charlie setting light to it. At another time, Charlie arrived for lunch before Harold and, giggling, got into a large trunk that was there to sit on. When he heard Harold arrive he began to make various noises and called Harold's name in a ghostly voice. For Harold it was not obvious where this was coming from but when he realised he sat on the chest's lid for the rest of the lunch time.

Charlie enjoyed painting and invited me to his cottage to see his work. He let me choose a watercolour. My choice depicted a vase of flowers, beautifully painted, and with his tax demand lent against it. I was amused to see two boxes outside his front door, one labelled 'Post' and the other "Suggestions". This visit was at the time of the coronation of Queen Elisabeth II. Charlie had celebrated the event. He took me round the back of his cottage to a brick privy which he opened to reveal the wide plank that you sat on which he had painted as a union jack with the hole above the bucket in the centre.

Charlie told me once that he had joined the navy as a boy. He related how he lined up with other recruits collecting his kitbag and letter stencils to use to print his surname on the bag. When he presented them to the officer in charge, the officer noticed just two stencils and clouted him round the head saying that his instruction was to collect the stencils for his surname not just his initials! Charlie didn't have the courage to point out that his surname was EDE. During his naval service he fought at the battle of Jutland in 1916 on HMS Thunderer. During a more peaceful interlude he claimed that he painted his first picture on a canvas patch on the seat of the trousers of a fellow sailor sleeping on the deck.

When Vivian Fuchs sailed to Antarctica in the Magga Dan in 1947, Charlie went to see him off from the dock in London. He pushed through the crowd to hand him one of his paintings of the Chilterns. Unfortunately, the expedition met dreadful weather and Fuchs and his crew were marooned on Graham Land for over a year. Charlie's painting hung in their cabin until they made their escape. On his return, Fuchs contacted Charlie and thanked him for the painting which he said was the only gift not given to gain commercial advertising.

*Philip Hussey*





# Active Pest Control

- ❄ All Pests and Wasps Nests Treated
- ❄ Service Contract
- ❄ One-Off Treatments
- ❄ Wildlife Management

*For all your pest control requirements contact:*

**01494 562325 or 07966 154655**

**info@active-pest-control.co.uk**

**9 Christopher Close,  
Naphill HP14 4SF**



**01296 706260**

**SOLAR PV  
DESIGN  
&  
INSTALL**

**Sunshine**  
Energy Solutions



*Join the green revolution and harness  
the unlimited power of the sun*



[www.sunshineenergysolutions.co.uk](http://www.sunshineenergysolutions.co.uk)  
[info@sunshineenergysolutions.co.uk](mailto:info@sunshineenergysolutions.co.uk)

**PRIVATE TUITION,  
FACE to FACE or ON-LINE**

**NEED A LITTLE MATHS HELP?**

**I TEACH MATHS UP TO GCSE,  
ALL AGES AND STAGES**

**PREPARING TO MOVE TO SECONDARY  
SCHOOL?**

**Give your child a boost with the 11 PLUS**

**I HAVE YEARS OF EXPERIENCE IN PREPARING  
CHILDREN FOR 11plus  
AND OTHER SELECTION TESTS**

**I am fully qualified and have an up-to-date  
CRB certificate**

**Contact Irene on 01494 562963**

**Text 07896 685141**

**[irenecretchley@hotmail.com](mailto:irenecretchley@hotmail.com)**

**Electrician**  
**Steve Thomas**



***Your local electrician***



**NIC EIC Approved**

**Email: [Thomas.electrical@sky.com](mailto:Thomas.electrical@sky.com)**

**Tel: 07957 568715**



## Church News

Dawn chorus listening, walking round the Hughenden Estate, picnic with Teddy Bears and toddlers, BBQ and swim, ploughman's lunch, churchyard tidy-up, summer weddings: all events of the summer months at St Michael's. The sun shone for some, indeed for most of the time for most of the events, or is my memory clouded?

The sun in fact did not shine quite enough today (as I write), but at least the rain held off, until the latest of these events was finished: the annual Teddy Bears picnic where our toddler group members bring teddies and family members to join them in the Mothers' Union garden.



A wandering red kite visited the garden both before and after the picnic, but thankfully did not join us sampling the sumptuous fare laid on by the MU, nor did it interrupt the Tiny Tots service

led by Keith with musical accompaniment from Nicky.

Members of the church also joined others from across Wycombe for a worship celebration called LOVE WYCOMBE. This event, which was originally held in Frogmoor, is now held on the Rye and brings together all Christian churches, and people of all ages and backgrounds from across the Wycombe area for prayer, music and talks. Some people took picnics, but a variety of food offerings were available and of course ice-cream.

We await the return from sabbatical of Helen Peters our associate minister, who will surely have much to share about her time of learning, reflection and relaxation: in particular we want to know how she got on in her silent retreat.

Our next event is the famous Mothers' Union Ploughman's lunch, also to be held in the MU garden, weather permitting, at 12pm on July 2nd.

Details of all St Michael's events can be found on the website: [www.hughendenparishchurch.com](http://www.hughendenparishchurch.com), where copies of the parish magazine can also be found. You are welcome to visit the church, which is open during 'normal' daylight hours, and view the beautiful historic building, or rest in the tranquillity of the church yard, listen to the birds and admire the view.

*Jane Tyrer*

## WESTFIELD LEASING

Personal or Business car & van leasing  
(A new car could be cheaper than you think.)

Free advice and quotes available

**01494 569392**

[john@westfieldleasing.co.uk](mailto:john@westfieldleasing.co.uk)

## Pilates with Pamela

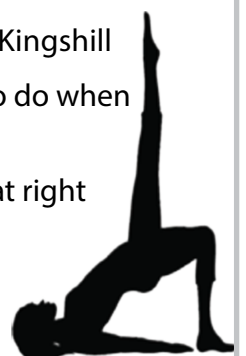
### Healthy Back Pilates !

Naphill, Great Kingshill and Little Kingshill  
LIVE classes / Zoom / or recording to do when  
you're free !

Multi-level classes, so you work at right  
level for you.

07759 831706

[www.pilateswithpamela.co.uk](http://www.pilateswithpamela.co.uk)





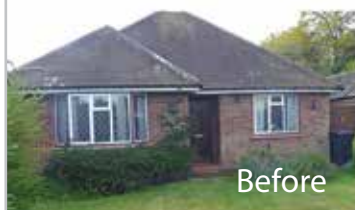


# Hunter Homes

With over 20 years experience, Hunter Homes are a professional building company who can work with you from your initial ideas, through to completion.

We offer all building services including, total refurb, kitchens, bathrooms, extensions and hard landscaping as well as full project management.

A local, family business who offer a professional and high quality service.



Before

Contact details:

☎ 07708 800 237

@ Hunterhomes@live.co.uk

f @hunterhomes bucks



After

# A.ELLIS

## Tree Surgery

Fully Qualified Tree Surgeons



We undertake all aspects of hedge trimming and tree surgery

For a free, no obligation quote please contact us

T: 01494 817234 M: 07709 491589

E: info@aellistrees.com

www.aellistrees.com

For fencing enquiries call Mike on:

T: 01494 868466

## Clean and Tidy Decorators

All aspects of the trade internal and external protection, preparation, painting and paper hanging  
Locally based, professional, friendly and reliable

With over 30 years experience



'Quality work without cutting corners'

Call Steve: **07932749510** alternatively

email: cleanandtidydecorators@gmail.com

## Yoga For Healthy Lower Backs

A specialised 12-week Course

An evidence-based mind body approach to improving lower back function and reducing pain

"Great course and amazing teacher. After 7 years of neck, shoulder and back pain, I now have weeks of no pain and am improving all the time"  
Sarah



Courses starting in Sept in Lacey Green and on Zoom

For more information and to sign up, contact

hello@clairepageyoga.com  
https://www.yogaforbacks.co.uk



Architectural Design  
Interior Design  
Planning Applications  
Building Regulations

hello@retsofdesign.com 07985 478563 www.retsofdesign.com







## Our News

Classics on the Crick was a fabulous day! Bon Ami was packed inside and out for most of the day. We were pleased to be part of such a worthwhile event. A huge thank you to all of the voluntary organisers and helpers. We look forward to finding out the total amount raised for Air Ambulance.

A very big thank you as well to the extremely kind, anonymous gentleman who mended our coffee machine at a very busy moment. We are very grateful and would really like to know who you are. Please do call in and see us.

Another thank you goes to our lovely customers, Sue and Richard Smith, regular customers whose company we always enjoy. We were extremely grateful when they offered to plant out our large hanging baskets. Thank you so much; we look forward to seeing our five baskets bloom as summer progresses. Richard went a step further and fashioned an ingenious self-made watering system to make it easier for us to water them every day.

Do call in over the summer to sample one of our weekly specials, some homemade cake or just an ice cream - one each for you and your dog! Weather permitting you can take the opportunity to enjoy our

sunny terrace, alone or in the company of our friendly customers.

Finally, a heartfelt thank you to our many loyal customers and we are always very happy to see new faces. We wish you all an enjoyable summer.

Very best wishes

*Ruth and Dorothy*







National Inspection Council  
Electrical Installation Contractors



Member No: 041067



Our team of electrical, plumbing and gas engineers are qualified to carry out all type of domestic & commercial works including the following

**For Free Estimate Please Call:**  
**01494 700 389 / 07811 946 611**

#### ELECTRICAL

- Extra Socket + Lighting Points
- Full / Part Re-wiring
- Consumer Unit Upgrades
- Electrical Condition Report
- Garden / Security Lighting

#### PLUMBING

- Hot & Cold Pipework
- Repairs & Installations
- G3 Approved Cylinder installers
- 1st and Second fix Kitchen
- Bathroom / WC installations

#### GAS

- Landlords CP12 safety certificates
- New Boiler & Central Heating Installation
- Boiler servicing & repairs
- Power Flushing / Magnacleanse
- Cooker / Hob / Fire installation Servicing

## BEST PALS

### Professional Dog Grooming

*Established 20 years*



Yvonne Clough  
Ridgemoor  
Bryants Bottom Road  
Great Missenden  
HP16 0JT

**Mobile: 07719 874 376**

**Email: [yvonneclough1966@gmail.com](mailto:yvonneclough1966@gmail.com)**

### Mobile Foot Health Practitioner

*for all your Chiropody requirements*



**Fiona Gibbard**

M.C.F.H.P. M.A.F.H.P.

*"Bringing footcare to your door"*

**Prompt and courteous attention assured**

**Tel: 01494 482444**

**Mob: 07946 821451**



## Banford Flooring

*Your local domestic and contract floor layer*

**Kerry Banford**

**01494 562966 / 07443 451303**

**email: [thebanfords@btinternet.com](mailto:thebanfords@btinternet.com)**



Wycombe  
Photographic Society



Wycombe Photographic Society  
is recessed for July and August.  
Please see the August/September  
Gazette and our website for  
all our September/Autumn  
events and news.

*Peter Davis*

Membership Secretary  
Wycombe Photographic Society



[www.wycombephotographicsociety.org.uk](http://www.wycombephotographicsociety.org.uk)

Photograph courtesy Peter Davis



## Princes Risborough Bowls Club



Despite the somewhat disappointing weather, our trial membership scheme has so far gained us 10 new members with a further 12 having coaching sessions. A warm welcome to them all. The Tuesday afternoon triples gives all new bowlers a great opportunity to improve their game and on Friday evenings at 6pm it's rollup and play when anyone can come along and have a go. Our 9 Club friendly fixtures played so far have resulted in 6 wins and 3 defeats. The Bucks County Cup started with a win over Wendover, but our next two games were lost by narrow margins. Two more games to play. Internal Club competitions are now well under way.

For a full fixture list, match reports and more information about our club, please visit our website:

[www.princesrisboroughbowlsclub.co.uk](http://www.princesrisboroughbowlsclub.co.uk)



We are still keen to recruit more new members to play this most sociable of sports, so if you would like to make new friends and get valuable exercise, it's not too late to give Lawn Bowls a try in 2024. No previous experience is necessary and free coaching is at hand. Social membership is also available. If you are interested or require more information, then please contact me. I will then be able to arrange a "taster" session as soon as it's convenient.

If you have a local business and would like to join our sponsors, giving you a permanent presence on our website and/or an advertising board around the green, then please contact me:

**Del Behenna (Recruitment & Sponsorship) on  
01844343230 or [d.behenna@btinternet.com](mailto:d.behenna@btinternet.com)**

A warm welcome is assured, we would love to hear  
from you.





Nikki Annable Dip FH MCFHP MSC

## FOR YOUR EVERYDAY FOOT HEALTH NEEDS IN YOUR HOME

General foot health and hygiene  
High risk feet  
Diabetes  
Peripheral arterial disease  
Arthritis  
Fungal infections  
Ingrown toenails  
Corns and calluses  
Verrucas  
Athlete's foot  
Dry and cracked heels  
Sports injuries  
Foot massage  
Cut and file nails

CALL OR EMAIL  
TO BOOK AN  
APPOINTMENT  
TODAY:



07714 207180



annablen324@gmail.com



Groewood Foot Clinic



**ladies & gents**  
award winning hairstylists

*Mike & Maisie*



OPPOSITE NAPHILL  
VILLAGE HALL



07736832052



www.hairvibe.co.uk



@hairvibes\_2019



@MichaelMurphyhair

**watson**  
property finance



**Get in touch today**

# Your local mortgage expert.

Over 28 years in financial services and property related finance.

With **expert, friendly advice** and a **can-do attitude**, we are dedicated to finding the **right property finance solutions** for our clients.

Call us now on

**01494 562399**

**07973 151302**

andrew@watsonpropertyfinance.co.uk

- Residential mortgages and remortgages
- Buy-to-let mortgages and remortgages
- Further advances and additional borrowing
- Product switches and transfers
- Second charge/secured loans
- Bridging finance
- Commercial loans and more...

YOUR PROPERTY MAY BE REPOSSESSED IF YOU  
DO NOT KEEP UP REPAYMENTS ON A MORTGAGE  
OR ANY OTHER DEBT SECURED ON IT.

*Andrew Watson*

Andrew Watson  
Principal



COMMERCIAL MORTGAGES, SOME BUY-TO-LET MORTGAGES AND BRIDGING FINANCE  
ARE NOT REGULATED BY THE FINANCIAL CONDUCT AUTHORITY (FCA)

Watson Property Finance is a trading style of Andrew Watson which is an appointed representative of The Openwork Partnership  
which is a trading style of Openwork Limited which is authorised and regulated by the Financial Conduct Authority.

Approved by The Openwork Partnership on 27/02/2024

# THE WHEEL

## Naphill



**Situated in the heart of The Chiltern Hills**

*We are a small traditional village pub with a big heart.*

- Good Beer Guide Since 2008
- Gardens and Covered Areas
- Traditional Pub grub
- Great Atmosphere
- Very Dog Friendly
- Cracking Ale

*Always offering a warm welcome with a good pint of traditional cask conditioned ale and proper traditional pub grub.*

Visit our website: [www.thewheelnaphill.com](http://www.thewheelnaphill.com)  @TheWheel



### Opening Hours

#### Drinks

**Tuesday - Saturday:**  
12pm - 11pm

**Sunday:**  
12pm - 10:30pm

**(Bank Holiday Mondays)**  
12pm - 8pm

#### Food

**Tuesday - Saturday**  
12pm - 2:30pm then 6pm - 9pm

**Sunday**  
12pm - 3:30pm

**(Bank Holiday Mondays)**  
12pm - 3:30pm

*Last food orders are 15 minutes before the advertised closing times.*

**The Wheel, Main Road, Naphill, Buckinghamshire, HP14 4QA Email: [contact@thewheelnaphill.com](mailto:contact@thewheelnaphill.com) Tel: 01494 562 210**

## The Wheel News

We would like to thank and congratulate The Classics on The Crick team that yet again have put on an amazing show. As always, the display of cars and motorcycles was fantastic, and our garden was busy with everyone watching the cars and bikes (even if the weather was a little chilly). I was also happy to learn that Mother Duck and her three ducklings were safely removed from the field and are safe and sound. I hope you raised lots of money for the air ambulance. I would also like to thank all the volunteers who help run this event, as without you the village doesn't have these amazing days to enjoy.

Talking of village events the Fireworks committee is in need of more volunteers for it to go ahead. Sadly, there was no Fete or Music this year due to the lack of help and it would be devastating if the Fireworks went the same way too.

June has been a funny old month with the weather being the main cause. We have still enjoyed a few sunny days and have had lots of fun too. We have had two staff members going through their GCSE's

and two doing their A levels, so it's been stressful for them, but they have also worked very hard. We hope to be reporting on how well they have done and what's next for them.

We haven't planned lots for this summer as we are doing work on the pub, decorating the outside and more inside. Hopefully there will be no interruptions for you. It will look amazing when finished.

This summer is all about sport.

- Euros - 14th June/ 14th July - Come on England
- Wimbledon - 1st July/ 14th July
- The Olympics - 26th July / 11th August

As always, thank you for all your support and we will see you soon in our sunny garden (hopefully).

*Mark and Claire*  
and the Wheel Team.



Tel: 01494 562210  
[www.thewheelnaphill.com](http://www.thewheelnaphill.com)



# YOUR LOCAL TIMBER MERCHANT



- Timber & Sheet Materials
- Decking & Landscaping
- Fencing & Cladding
- Gates
- Internal Doors
- Flooring Showroom
- Fixings & Ironmongery
- Sheet Cutting Facilities
- Retail & Trade Welcome
- Collection or Delivery

**YOU CAN ALSO  
ORDER ONLINE!**

## The Timber Group

**01494 521421 | 27 Victoria Street, HP11 2LT**

Open Monday to Friday 06.30am – 17.00pm

[www.thetimbergroup.co.uk](http://www.thetimbergroup.co.uk)

Follow us on Facebook  Instagram  LinkedIn 



### Your Naphill Resident Plasterer

All types of internal and external plastering undertaken including:

- Artex ceilings re-plastered to a smooth finish
- Damp problems rectified
- Rooms re-skimmed

Over 30 years  
experience

Fully insured

For a free quotation  
or advice contact

Ian Spicer 01494 562958  
or 07973 553960  
e-mail [i.spicer288@btinternet.com](mailto:i.spicer288@btinternet.com)



## SUTTONS

PROPERTY MAINTENANCE

**ALL GENERAL MAINTENANCE  
WORKS CARRIED OUT**

**PATIO SPECIALIST  
WALL & FLOOR TILING  
PAINTING & DECORATING  
PLUMBING  
FENCING  
BLOCK PAVING  
GUTTERS CLEARED**

Call Trevor for a Free Estimate  
No Obligation - No Call Out Fee  
E-Mail: [suttonsproperty@aol.com](mailto:suttonsproperty@aol.com)  
Tel: 01494 638953  
Mobile: 07754 948743

## Naphill Brownies

We always look forward to the summer term, when the brownies can get out and enjoy the warm, light evenings. Unfortunately, this has not quite been how it has worked so far this term, with week after week of cold, wet Thursday evenings.

In spite of having to adapt our plans a good deal, we have had a great time this term learning about exploring our environment.

We have followed directions and found out lots about maps. We have considered the trail that a person (or animal) might leave that would allow us to know they were there (tracking), and we have found out about our local history.



On the subject of local history, Wycombe Museum opened for us for a Brownie visit on D-Day. The girls had fun exploring the exhibits and finding the answers to a quiz. They museum

staff had set up a lovely craft for us making a model military bi-plane. There were also (child-sized) military uniforms, hats and gasmasks to try on.



Over half term many of the brownies followed this up by finding out about a local landmark to complete their Local History badge.

We have an exciting few weeks heading up to the end of term, not least an evening of 'It's a Knockout' fun on the Crick with Giant inflatables. If you are coming to the Village Hall to vote on 4th of July, you may well see us out there. It promises to be an amazing evening.

In combination with a summer of sport (Euros/Olympics), and our end of term picnic, we have lots to look forward to.

Finally, thank you to the many people who have shown a real interest and concern about whether the Brownies will be staying open. It is truly heartwarming to know how much people care about the future of our Brownie pack. From September, the plan is to run Naphill Brownies alongside Walters Ash Brownies as a single unit. For the time being, we will not close the Naphill pack, but will run both groups together. This will accommodate all our current brownies and keep the option open to restart Naphill Brownies should someone step up to run the pack.

The details are still being finalised.

*Brown Owl (Ruth Daly)*

ruth.daly3@btinternet.com

1st Naphill Brownies

Thursdays 5:45-7pm



## Naphill Tennis Club



The Wimbledon Championships are now underway and tennis at Naphill is also in full swing! Time to indulge in strawberries and cream hopefully in summer sunshine, and enjoy the action!

In keeping with the recent French Open, our ever-inspiring coaches, Mel and Becs, organised Naphill's very own French Open Tennis Tournament for both juniors and seniors and a 'Wimbledon style' mini tournament is in the planning stage as this goes to press.



For further information regarding Naphill tennis, please visit our website:

[www.clubspark.lta.org.uk/NaphillLTC](http://www.clubspark.lta.org.uk/NaphillLTC)

or email:

[naphilltennismembership@gmail.com](mailto:naphilltennismembership@gmail.com).

*Jenny Tench*



# Manor Garage

 MOT Testing

 Diagnostics

 Servicing

 Air Conditioning

 Repairs

 Tyres - Exhausts - Batteries

 Electric & Hybrid Vehicles

 01494 564222

 dnaautos243@outlook.com



**Stump Grinding  
On-Site Log Splitting  
Garden Clearances**

**Call or WhatsApp: 07427410011  
Email: info@stumpd.net**

**www.stumpd.net  
Kieran Geggus  
Based in Naphill**

FIND US:    Yell

## BUILDING PLANS & PERMISSIONS



ZACHARY DESIGN

**07711043244 • zacharydesign@btconnect.com**  
CHARTERED DESIGNERS • LITTLE MOSELEY HOUSE • NAPHILL • HP14 4RE

## Hughenden Players

### Time Warp!

!It's always difficult sometimes to get the articles for the magazine to synchronise with what is actually happening!

As I write we are still in rehearsal for our "Hound of the Baskervilles" Picnic and Play (13/14 July see website). We are constantly referring to long range weather forecasts but the tickets are selling well. We will report later!

One thing that doesn't change at this time of year is preparation for our annual Pantomime, oh yes it is!

Choosing the title is not just a matter of sticking a pin in a wish list. All sorts of variables have to be taken into account. Do we have the cast members to fit the characters? What does the staging demand in the way of scenery, music, technical issues and of course special effects. Most of all is it a show that you, our audience will want to see! **One of the contenders for this year is "Scrooge"!**

How can a Panto be made out of one of the most iconic Christmas stories ever, well it has and it does faithfully follow the story with a few twists. If the Muppets can make a successful adaptation, then trust us, so can we! No promises. We shall make a final decision in late July. If you are interested in being part of Panto 24, get in touch.

That was the good news, now we have to relate that another of our stalwarts, Lin Smith passed away recently. Like our friend Daphne Hicks, Lin found the love of amateur drama later in life, when the Valley Players was restarted. She played many parts.

Lin will be particularly remembered for her role as "crabby manager" of a Charity Shop in "Shop for charity" (March 23). Like a lot of us she had a love of our Panto but her last performance was as The Queen in "Three Musketeers". Lin you will be missed!



*"Our revels now are ended.*

*These our actors were all spirits and have melted into air, thin air.*

*We are such stuff as dreams are made of, and our little life is rounded with a sleep"*

The Tempest, William Shakespeare.

*Andrew Pitman*

Chair, Valley Players

[www.valleyplayershughenden.co.uk](http://www.valleyplayershughenden.co.uk)



**CHRISTINA BOHANE FITNESS**  
HELPING BUSY PEOPLE BE  
HEALTHY | STRONG | LEAN



Are your fitness goals suffering because you lack motivation, energy or time?

Book your **FREE** 15 min consultation today  
[www.christinabohane.com](http://www.christinabohane.com)

to see if a **personal or group training** programme using my proven **SISU** methods are right for you

Unleash SISU, the energy and strength you didn't know you had.

[info@christinabohane.com](mailto:info@christinabohane.com)  
**07740880966**

**extremeclean.co.uk**

**Superior Cleaning and Application of Protectors**

- Domestic and Commercial
- Carpet, Upholstery, Leather, Curtains
- Modern & Oriental Rugs
- Tile & Grout/Stone Flooring
- Anti-Allergen Treatment
- Specialist Stain Removal
- Wood Floor Refinishing

**Paul Brooker**

35 Place Farm Way  
Monks Risborough  
Bucks HP27 9JJ

T:01844 346379/344735 M:07866 376934  
E: [jjjp@uwclub.net](mailto:jjjp@uwclub.net) W: [www.extremeclean.co.uk](http://www.extremeclean.co.uk)



# VILLAGE ENVIRONMENTAL SERVICES

## DOMESTIC DRAIN SERVICES

Proprietor: Dennis Cook  
Est. 1979

# BLOCKED DRAINS?

FAMILY RUN BUSINESS SINCE 1979

BLOCKED DRAINS CLEARED

REASONABLE RATES

CCTV DRAIN SURVEYS

NO EXTRA CHARGE FOR EVENING, WEEKEND OR BANK HOLIDAY CALLOUTS

FULL PUBLIC LIABILITY INSURANCE

## CALL US DAY OR NIGHT

**24/7  
CALLOUT  
SERVICE**



**07850 635 844** 01296 624 221 (MESSAGES)



## A. MAY FLOORING SERVICES



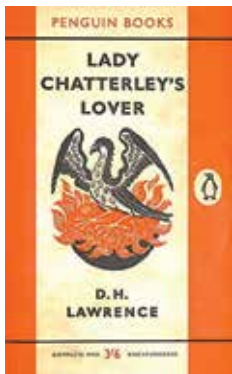
### Independent Hard Flooring Installation Specialist

- \* Engineered & Solid Oak Wood Flooring
- \* Herringbone & Chevron
- \* Laminate & Luxury Vinyl Floors
- \* Fixed or Floating
- \* Sub floor preparation & Skirting Boards
- \* Supply and/or fit only
- \* Site visits and free quotations

I'm Recommended on  
**myBuilder**  
.com

Call Alex 07868594191  
maysflooring@yahoo.com

Your Local Naphill  
Flooring Specialist



Following on from highly successful visit to Bradenham and Bisham Churches, our Local History Group combined a talk on the history of Penguin Books with a visit to the Penguin Books Collection at Oxford Brookes University. We all found the story behind the sale of the multi million copies of Lady Chatterley's Lover revealing!

By popular request, one of our members continued his stories of the involvement of High Wycombe and surrounding areas in both WW1 and WW2. During World War 2, the bodies of Mosquito planes were made in the furniture factories in High Wycombe. (see photo below) He concluded his talks with a look at life in our area during the second World War. See photo 2 (old Frogmore photo)



Our Antiques and Collectables Group enjoyed a fascinating talk on the history of Brass including its continuing popularity as a collectable, also reminded us that a Local Mill in Marlow was a major supplier of brass thimbles. We also learnt, from the writings of Samuel Pepys, that Brass Pins were useful for warding off the advances of amorous males. Much amusement generated from this 'fact' and who knew that Temple Mills, near Marlow, rolled sheet copper for 'bottoming' hundreds of warships?



Thimbles, similar to above, were made in the 18th century at a Marlow Brass Mill

Perhaps one of the most interesting and informative talks this month was from our Science Group, where our guest speaker from the Abingdon u3a gave a fully illustrated talk to explain the intricacies and applications of all forms of imaging, including Xray, MRI and CAT scanners, plus ultrasound and other technologies used in today's medicine.

Many of our members have been on our annual u3a holiday. This year it was to Devon and its surrounding areas. I will be reporting on the fun we had in the August/September edition of the Gazette.

Our programme of Monthly general meetings continue to be held throughout the summer. These meetings are held on the fourth Wednesday afternoon of the month at 2.15pm in Lacey Green Village Hall (X9 stops outside). A guest speaker talks for about an hour followed by refreshments. Up coming talk: **24th July 24. Dr Helen Fry - MI9 The British Secret Service for Escape and Evasion.**

If you would like to join us or want details of all our activities and events, please see contact details as below.

*Paul Gillam*

Email: [gilliamph@aol.com](mailto:gilliamph@aol.com),

Web: [High Wycombe and District \(u3asite.uk\)](http://High Wycombe and District (u3asite.uk))

FB: [Facebook](https://www.facebook.com/HighWycombeandDistrictU3A)



**St John's Church**  
**Summer Garden Party**  
 with musical entertainment  
 & tea / cakes

**Saturday 3 August 2024**  
**3-5pm (doors open 2:30pm)**  
**Lane Farm, Church Lane, Lacey Green**

Tickets available in advance or on the day  
**Adults £10    Children £5**

See Canon Tony or Margaret Gray for more details







## BIRDS BATHROOMS

*"PROFESSIONAL,  
PUNCTUAL, HONEST  
AND RELIABLE"*

07743858031

BIRDS-BATHROOMS.CO.UK

LUKE@BIRDS-BATHROOMS.CO.UK

f /BIRDSBATHROOMS @BIRDSBATHROOMS



Brand new  
nursery  
at  
**Naphill & Walters  
Ash School**  
**NOW OPEN!**



For more information  
01494 957196  
enquiries@toddleingroup.co.uk  
www.toddleingroup.co.uk

## Speen Pilates

### ONES TO ONES ON STUDIO EQUIPMENT GROUP MAT CLASSES (MAX 5)

Pilates aims to enhance your posture, strength and flexibility, body tone, stamina and general fitness whilst releasing unnecessary tension.

For more information and details of group classes  
go to [www.speenpilates.co.uk](http://www.speenpilates.co.uk)

All covid 19 social distancing guidelines and safety measures implemented.

**Amanda: 07733 307475**



**MOBILE REPAIRS  
AT A FRACTION  
OF BODYSHOP  
PRICES**

Ask Revive! to look at your  
bodywork today.

**Bumper Scuffs • Car Scratches • Alloy Wheel Damage**

For a free quotation, contact Byron:  
**01494 490072**  
[Byron@revive-uk.com](mailto:Byron@revive-uk.com)  
[www.revive-uk.com](http://www.revive-uk.com)

**revive!**  
setting new standards in mobile car care

Twitter Facebook Instagram LinkedIn



**upward powered  
access Ltd**

Powered Access Equipment  
Hire • Sales • Service • Training

**01865 821 522**

**Sponsors of Naphill Christmas Tree Lights**



## Are you living in growth?



Summer is a wonderful time of growth and all around us we can see nature bursting with abundance and new life. But are you feeling stuck?

The hypnotherapy I practice follows a core principle that we are usually inhabiting one of two states. Either we are in various degrees of protection, living in what we perceive as a challenging and potentially hazardous world in which we need to protect ourselves. Or we see the world as place in which we can learn, thrive and grow. Hypnotherapy aims to guide you from a fearful state to one of growth and possibility.

Living in a state of protection limits everything we do - our relationships, our work, our health – in fact, every goal, dream and decision ends up being coloured by this limited viewpoint. If some-one is unconsciously constantly primed for attack or disappointment, all their actions will be taken with this thought in mind.

Often, people do not even know this is their instinctive way of being. A sure sign is when some-one does not like themselves and they find it nearly impossible just to have 'fun' being themselves. They find it hard

to take risks, make decisions or try new things. Life can very quickly become stagnant. Also, the external world becomes to blame for all the difficulty that inevitably arises along the way.

While aiming for fun in life might seem a trite goal, if we are having fun being who we are, we enrich all those around us and make decisions and plans that will best serve us, whoever we are. Being in growth also enables us to build confidence in ourselves as we start to take on new challenges outside of our comfort zone.

Hypnotherapy works to uncover where the main roadblocks are hidden, usually as a result of our early experiences. By accessing these memories and learnings, we can start to reframe, update and change our approach to life.

Some questions to reflect upon:

- When did you last try something new?
- When did you last do something that scared you?
- If you could not fail, what would you be doing?
- When did you last make a new friend?
- What did you used to love doing when you were younger that you no longer do?

It's good to remember, we don't need to be desperately unhappy to benefit from therapy. Often, we do not even realise just how deeply 'stuck' we are and how looking at the world through a protective lens inhibits our well-being and stifles our future. Maybe this summer, it's time to turn towards growth.

*Alison Scott*

**Client Testimonial:** *"I want to thank you Ali so much for your invaluable support, counselling, and guidance. I feel that I'm on the road towards freedom - and feel a lot more positive, energetic, and secure in myself than I did a few months back. The unwinding of certain events in my life and recognition and removal of these blocks has put things in a different perspective for me, and your great 'active listening' has enabled me to properly unload while also getting thoughtful feedback from you."* Anon

### COGNITIVE HYPNOTHERAPY



Do you feel that you are not living your best life, no matter how hard you try?  
I practice hypnotherapy, reiki, and therapeutic coaching in Naphill as well as online.

***Hypnotherapy can help with such a wide range of issues.  
Our unconscious mind is often in charge of how we think.  
We don't know why we repeat the same negative patterns.  
Making the unconscious conscious can bring about powerful  
changes in the way we perceive ourselves and others.***

#### **"LIFE-CHANGING!"**

**What does hypnotherapy help with?**

Most clients come to me for help with the following:

- Stress and anxiety
- Low mood
- Lack of confidence
- Big life changes (pregnancy, relationship breakdown and grief)
- Young people struggling with exams, school or relationships
- OCD and neuro-diversity
- Health and pain issues

**When changes take place at this deeper level, the challenges of daily life can be alleviated, leading to a healthier outlook, positive habits, and increased confidence.**

*Alison Scott*



**About me:** I have a Diploma and Master Practitioner qualification in QCH Therapy combining CBT, Gestalt Therapy, Positive Psychology, Evolutionary Psychology, Parts Therapy, NLP and EFT. I gained my Master Reiki qualification Second Degree in 2018.

**Contact me for a free initial consultation:**

**07989 535527**

**ali@alisonscotthypnotherapy.co.uk**

**www.alisonscotthypnotherapy.co.uk**



**HELEN'S  
HAPPY PAWS**

**PET CARE  
TAILORED TO  
YOU....**

**SERVICES  
INCLUDE BUT ARE  
NOT LIMITED TO ...**

- CAT SITTING
- POP IN PET VISITS
- DOG SITTING
- DOG WALKING
- WATERING PLANTS

**TO FIND OUT MORE:  
07747773829**



# Logs for Sale

*seasoned*

Free Delivery

07816 507564  
or  
01844 274096  
dpope1986@hotmail.com



## M A HUNT

painting & decorating

01494 564998  
07775 626752  
hunt.m6@sky.com

27 Saunderton Vale, High Wycombe, Bucks HP14 4LJ



Keep This Number Handy  
You May Need It To Contact...  
Your Local

# ELECTRICIAN

Call Tony on 07944 162958  
or  
Email Tony@plugs.me.uk

**plugs**

Registered Competent Person Electrician



*Fettling Land-Rovers since 1988*

# LPME

## Motor Engineering

**LPME.co.uk**

- SERVICING & M.O.T REPAIRS
- DIAGNOSTIC TESTING
- WELDING & FABRICATION
- TYRES, EXHAUSTS & BATTERIES
- RESTORATIONS & REBUILDS
- UPGRADES & ACCESSORIES
- ENGINE & GEARBOX CONVERSIONS
- LARGE STOCK OF USED PARTS

 01494 484694  
contact.us@lpme.co.uk 

Collection from home / work by arrangement

**DEFENDER**  **FREELANDER**  
**RANGE ROVER** *Discovery*

## New Players & Beginners Always Welcome!



**Mens Walking Football**  
Tuesdays  
6.15pm - 7.15pm

  
Walking Football

**Ladies Football**  
Thursdays  
6.30pm - 7.30pm

  
Ladies Football

Scan above for more information!



## Taking Care of our Senior Dogs

This is a very emotive topic for me, being the owner of a pooch who will be 16 years old this month! Over the years, we've adapted and evolved the way we live, to support Ruby as she moves through the various stages of her life. We have spent the best part of 10 years regularly running through the countryside together, as well as taking part in agility classes and the odd competition. Ruby is an integral part of our family and we can't imagine life without her.

There are many tweaks that can be made to family life and habits to ensure your pooch continues to be part of busy households and lifestyles.

- Although they may be less keen on a long walk, mental enrichment is equally as important to keep active so they don't get bored – providing them with different toys and puzzle feeders can be a good way of keeping them entertained for longer, as well as walking them in different areas to discover new smells and to have a good sniff & potter.
- There are lots of ways to spend some quality time with your dog, if they can't enjoy the long walks that they used to. They may enjoy some gentle grooming, which also gives you the chance to check for lumps and bumps,

or any places where they might be uncomfortable being touched.

- Older dogs may have poor hearing and/or sight, so you may need to adapt how you approach them, to try and avoid startling them. We have found that if we gently blow on Ruby's head when she is asleep, it is less startling than touching her. Hand signals are useful too, when out and about, if your dog is looking at you, of course!
- Keep a close eye on your dog's weight – both weight loss and weight gain need to be checked.
- Senior dogs still need regular exercise! Not only will this help stop them putting on weight, but it gives them a chance to explore and meet other dogs and people. Ruby is much more engaged and energetic when we walk with other dogs and people, but there are also days when she is happy for a short sniff & potter.

If you have any concerns over the health and wellbeing of your dog, please speak to your vet to ensure there are no underlying medical conditions that need to be looked at.

Charlie

### Jacob's End of Treatment Party Fundraiser



Many of you know Lucy, Matt, Jacob and Kaitlin and will know of the battle they have had as a family since Jacob's diagnosis of leukaemia when he was just 3 years old. Jacob is now looking forward to "Ringing the bell" ending his treatment, later this year. To celebrate the end of his treatment, Matt and Lucy are organising a party to thank everyone who has supported them and plan some family days out to make up for lost time.

In support of the family and together with my husband, we have decided to take on the London Serpentine Swim to raise money for them. The event in September, is a two mile swim in the Serpentine, this will mean we will complete the London Classics Triathlon, having run the London Marathon and completed the Ride London Cycle event.



However, the real motivator will be to help Matt and Lucy and the kids celebrate this incredible time and create some new family memories.



If you would like to support us and ultimately, Jacob and his family, please go to the [www.GoFundMe.com](http://www.GoFundMe.com) website and search for **Jacobs End of Cancer Treatment Party** page.

Thank you for your support.

Charlie



### Dog walking & Pet Care

- Regular or adhoc dog walking
- Solo or group dog walks
- Pop in pet care

Does your Dog need walking, every day or just on an ad hoc basis?  
Do you want someone that will care as much for your dog as you do?

With many years experience of the local area and a love of dogs, I will make sure your dog will experience a variety of walks in Naphill and beyond.

### Get in touch:

e: [charlie@Rubyandme.uk.com](mailto:charlie@Rubyandme.uk.com)  
m: 07780600977



[www.Rubyandme.uk.com](http://www.Rubyandme.uk.com)



**MAN & VAN** – House/office removals, house/ garden clearances, item collection/delivery & waste removal. Available at short notice and happy to travel long distances. Local, reliable and efficient. Call Chris on 07540088573

**REIKI THERAPIST/PSYCHIC TAROT CARD READINGS.** Reiki will aid physical and emotional wellbeing, allowing the body's nervous system to active, detox and balance. Tarot will guide and give comfort. I am also a qualified Teacher of both. Contact Dee 07765884363 or Deebangel43@yahoo.co.uk

**PILATES AND YOGA WITH PAMELA** Local classes am and pm. See full timetable on web site [www.pilateswithpamela.co.uk](http://www.pilateswithpamela.co.uk) Please call to register /for more info Pamela 07759 831706

**LOCKSMITH:** Local Locksmith available 24/7 for emergency repairs & boarding up. Locks supplied, fitted, opened or upgraded. No call out fees, fast response Tel: 01844 274229 (day) or 07702 809477 (night) [www.rpclocksmiths.co.uk](http://www.rpclocksmiths.co.uk)

**MASSAGE:** Relaxing or Remedial. MASSAGE to help alleviate pain in shoulders, neck and back etc. Experienced therapist offering therapeutic, deep tissue, sports or acupressure massage. Home visits possible. Pamela Wilson 07759 831706 (ITEC/FHT registered).

**HAIR STYLIST.** Fully qualified and experienced. Offering hairdressing in the comfort of your own home or come to my fully fitted salon. Also, **Crystal & Reiki Treatments** [www.crystalheartandsoul.co.uk](http://www.crystalheartandsoul.co.uk) Call Sam on: 07843257689

**CRICKSIDE - YOUR LOCAL DECORATOR.** For all your painting and decorating requirements. Reliable, tidy and trustworthy. For a quality finish and efficient service, please call 07547 445268 or email [contact@crickside.co.uk](mailto:contact@crickside.co.uk)

**NEED HELP IN CUTTING YOUR HEDGES AND GRASS.....**call Dave on 07971324817. *This is not a business, it is just to help elderly or disabled folk keep their garden under control.*

**TK PLUMBING & ELECTRICS.** For all your plumbing and electrical needs. City & Guilds qualified. No job too small. All work guaranteed. References can be supplied. Call Tom on 01494 580518 or 07716 440916.

**THE ROOFING PARTNERSHIP** Provides a modern, professional and friendly service. Call William White for your Roofing requirements, free estimates and advice! TEL 01494 355187 MOB 07832 146427 EMAIL: [william@theroofingpartnership.co.uk](mailto:william@theroofingpartnership.co.uk)

**LOCAL WINDOW CLEANER** Friendly professional service & Fully insured. Cleaning windows the traditional way. Also available, Solar Panels, Conservatory Roofs, Gutters, Fascia & Cladding Cleaning. Supported by The Princes Trust. Call Mathew 07979150155 Email. [powell.cleaning@hotmail.com](mailto:powell.cleaning@hotmail.com)

**HIGHCLERE IRONING** Your local professional ironing service, using state of the art professional grade equipment. Free local collection and delivery within Naphill and surrounding areas. I provide a 24 or 48 hour turnaround. Contact Liz on 07890 056696

## Canine Cutz



### Dog Grooming

- Shampoo and conditioning treatments
- Clipping
- Scissor trimming
- Nail clipping
- Anal gland expressing
- Ear plucking and cleaning

*We offer extended opening hours, a late night on a Thursday and the occasional Saturday morning. Delivery and collection Service is available at a small additional fee.*

**01494 443349**

[www.canine-cutz.com](http://www.canine-cutz.com)  
[info@canine-cutz.com](mailto:info@canine-cutz.com)

**High Street, Downley, HP13 5XJ**



## Growing Your Own *More Gastropods*

With the recent very wet, mild winters the slug menace seems to be much greater. But since they are nocturnal one has to hunt them at night. As an aid in that task I dreamt many years ago that I could strap my LED light to my forehead so that the light would point in the direction I was looking. However, I was most reluctant to go out on my allotment late at night with my LED light strapped to my forehead. Sure as eggs, some neighbour would ring the police who would be round in a flash to deal with a report that someone was behaving suspiciously on the allotments.

Imagine the scene. Up comes PC Plod "Hello, Hello, Hello! What have we here?" I turn to face the officer, blinding him with my LED light. "I'm killing Gastropods officer." "Likely story" says PC Plod, staggering and unable to see. I turn to Plod, blinding him again. "But it's true officer, this is my allotment and I've killed 20 of them with my spade so far." "OK" says Plod, "show me your allotment tenancy agreement and either your passport or photo driving licence". Again I turn to Plod, blinding him again, "I don't have them with me officer". "OK," says Plod, thoroughly annoyed by now with being blinded and unable to see my dead Gastropods. "You will have to accompany me to the Station and explain to the Sergeant that you were killing Gastropods." The sergeant believes that Gastropods are legitimate immigrants and are the inhabitants of Gastropodya, a country in the Balkans which recently joined the European Union along with Croatia, Kosovo, Moldova, Transylvania, Macedonia and Montenegro. He charges me with murder and with horror I realise that the newspapers will soon be full of the story of the serial killer of Gastropods. I tell the sergeant that it is all a ghastly mistake but nevertheless he puts me

in a cell for the rest of the night. The next morning the police station is besieged by an army of press photographers and journalists eager to get a sight of the mass murderer of Naphill. I am released on bail and protest to the journalists that I am innocent but they do not listen - they want their story and lurid headlines is what they seek. I explain that there is no such country as Gastropodya but the journalists also believe it is a country in the Balkans and that I have been exterminating hapless citizens of that country who just happened to be on my allotment in the darkness minding their own business. My wife finds it all amusing and buys copies of all the newspapers next day to keep as souvenirs. Events then take a more serious tone as the magistrates sentence me to three months in jail with no parole, which is the standard tariff for serial killers. That could be serious since I would not be able to weed my allotment for three months. My head is spinning, I feel I am hallucinating, and try to wake up.

Happy gardening,

*Mike Mason*





## RJH Garden Machinery

- Mower servicing and repairs
- Blade sharpening and balancing
- Cultivator servicing and repairs
- Chainsaws/ hedge trimmers etc
- Engine oils

Call Robert: **07799 606949**

email: [robhastie@gmail.com](mailto:robhastie@gmail.com)



Tel: 01844 896035

Email: [contactus@wilsonfamilylaw.co.uk](mailto:contactus@wilsonfamilylaw.co.uk)

Wilson Family Law is a specialist family law firm based in Princes Risborough.

**We offer a free initial meeting to all new family clients** and can assist with the following:-

- Divorce / Civil Partnership dissolution and finances
- Children disputes (including international family law issues)
- Nuptial agreements
- Family Mediation
- Cohabitation disputes
- Domestic violence remedies



**DRAINS & DOWNPIPES**

**ALL ASPECTS OF DRAINAGE & GUTTERING COVERED**

**UNBLOCK – INSTALL – MAINTAIN**

- Blocked drains, toilets and sinks cleared with fixed prices
  - High pressure jetting
  - CCTV drain surveys
- All drain & gutter repairs & maintenance covered
  - Residential & Commercial
  - Fully Insured
- Free quotes, no call out fees
- Friendly, local & reliable



Contact Glenn on:

**Tel: 01494 482465**

**Mob: 07535 644363 / 07950 403094**

**Email: [info@drainsanddownpipes.co.uk](mailto:info@drainsanddownpipes.co.uk)**

**Web: [www.drainsanddownpipes.co.uk](http://www.drainsanddownpipes.co.uk)**

## S.K. Rouse Brickwork

**Extensions, Flintwork, Patios, Fireplaces, Walls, Block Paving, All Trades Supplied.**

92 Chorley Road  
West Wycombe Village  
High Wycombe  
Bucks HP14 3AR

01494 448201

07798 846793

[steve@skrouse.co.uk](mailto:steve@skrouse.co.uk)

**DELUXE ROOFING  
CONTRACTORS  
& SUPPLIERS LTD**



**John Mulry Mobile: 07860 845343**

**\*NEW ROOFS \*RE-TILING \*SLATING \*FLAT ROOFS**

**\*SARNAFIL & SINGLE PLY \*LEAD ROOFS**

APPROVED CONTRACTORS  
FREE ESTIMATES

Binders Industrial Estate, Cryers Hill, High Wycombe, HP15 6LJ

Phone 01494 716184 Fax 01494 717384

Email [johnmulry@deluxeroofing.co.uk](mailto:johnmulry@deluxeroofing.co.uk)

## David Kirtley

Electrician, Decorating  
& Maintenance

*Based locally*

- Fully qualified electrician undertaking all electrical work, including extra points, full re-wire, testing and fault finding
- Specialist high quality decorator, interior and exterior
- All small maintenance jobs.

*References available  
and happy to give you a price.*

Call David

**01494 863051**

**07703 783383**

Email [dvdkrtly@hotmail.com](mailto:dvdkrtly@hotmail.com)

Last month I promised (threatened?!) a deeper dive into the world of fortified wines and, as man of my word, here it is: my musings on the most misunderstood and underappreciated liquid on earth - sherry. If you had a similar upbringing to me then your first memories of sherry will be your nan drinking a little glass of sweet brown stuff on Christmas morning and it will have taken decades for you to realise that a sweet bottle of Croft or Harvey's Bristol Cream is not even nearly all there is to sherry. It would be like listening to 'Come on You Reds' and thinking that was all there was to Status Quo.

Sherry hails from the sunny Andalusian town of Jerez, Spain. It's produced using traditional methods that have evolved over centuries, giving rise to a wide spectrum of flavours and styles. The production of sherry begins with the Palomino grape, which forms the base for dry sherries, and the Pedro Ximénez or Moscatel grapes, used for the sweeter varieties. After fermentation, the wine is fortified with grape spirit, increasing its alcohol content and allowing it to age gracefully.

One of the most notable aspects of sherry production is the solera system. This method involves aging the wine in a series of barrels arranged in tiers. New wine is gradually blended with older wine, ensuring a consistent style and quality year after year. The result is a complex, multi-layered beverage that can range from bone dry to lusciously sweet, and always surprisingly affordable.

**Fino and Manzanilla:** These are the lightest and driest sherries, often compared to a crisp, bracing walk along the beach. As far away from Nan's sweet cream sherry as one can get! Fino is aged under a layer of yeast called flor, which protects it from oxidation and imparts a delicate, tangy flavor. Manzanilla, a type of fino from the coastal town of Sanlúcar de Barrameda, has a slightly saltier tang due to the sea air. Both are perfect aperitifs, best enjoyed chilled with tapas like olives, almonds, and seafood.

**Amontillado:** Initially aged under flor like a fino, amontillado then undergoes additional aging without the flor, exposing it to oxygen. This gives it a unique character, blending the light, fresh qualities of fino with the richer, nuttier flavours of oxidative aging. It's versatile enough to accompany both lighter dishes like chicken and richer fare like pork.

**Oloroso:** This style skips the flor stage entirely, aging

oxidatively from the start. Olorosos are robust and full-bodied, with deep flavors of dried fruit, nuts, and toffee. Their intensity makes them a great match for hearty dishes such as stews and roasted game, charcuterie, nuts, olives etc. Can be found in dry or medium styles.

**Palo Cortado:** This rare and enigmatic sherry starts life as a fino but accidentally loses its flor and begins to age oxidatively like an oloroso. The result is a wine that combines the finesse of an amontillado with the depth of an oloroso. Palo Cortado offers nutty, spicy notes and pairs wonderfully with cured meats and hard cheeses.

**Cream Sherry:** This style of sherry is often misunderstood due to its name, which might imply a creamy texture. In reality, cream sherry is a sweetened blend of dry sherries, typically Oloroso, with Pedro Ximénez or Moscatel. The result is a rich, velvety wine with flavours of dried fruit, caramel, and nuts, balanced by a subtle acidity. Nan's ruin.

**Pedro Ximénez (PX):** The sweetest of them all, PX sherries are made from sun-dried Pedro Ximénez grapes, resulting in a thick, syrupy wine bursting with flavours of raisins, figs, and chocolate. It's a dessert in itself but also pairs decadently with blue cheese, drizzled over vanilla ice cream or alongside your Xmas pud.


Despite its complexity and versatility, sherry often gets overlooked. Perhaps it's because sherry, like a jazz musician whose intricate solos are appreciated only by the discerning ear, remains an acquired taste. It doesn't taste like 'normal' wine, nor like a spirit, so it doesn't sit easily in any camp. Or, perhaps it's like a classic film noir, full of intricate plot twists and subtle nuances, and best appreciated by those willing to delve deeper. Much like these films or Jazz, sherry deserves to be celebrated for its sophistication, its range, and its ability to evoke a rich tapestry of flavours and emotions.

So, do the honourable thing – buy a range of different sherries and find which style suits – perhaps whilst listening to some Miles Davis and watching LA Confidential or The Maltese Falcon!



Adam Sergeant

 @giantwine

 @thewinegiantuk





**PRM SERVICES**  
Property & Garden Maintenance

**Garden Maintenance**

- All general gardening
- Lawn & hedge cutting
- Garden clearance
- Patios
- Fencing
- Decking
- Turfing
- Millboard decking approved installer

**Property Maintenance**

- General maintenance inside and out
- Internal painting & decorating
- Laminate flooring

*“ Paul did a lovely job rebuilding our courtyard, very pleased with it and other work he has undertaken for us. Lovely hardworking man and can recommend his work ”*  
- Facebook review

Based in Naphill, High Wycombe, I believe in delivering excellent customer standards by providing a high quality, reliable and personal service. I am fully insured and both private and commercial contracts welcome.

**Call or email Paul for a free quote.**

**07808 056109 / 01494 563784**  
**p.munday@hotmail.co.uk**

 Follow us on Facebook (facebook.com/PRMservices)

Take the right direction  
with expert financial advice



▶ We provide a comprehensive wealth management service, offering specialist face-to-face advice tailored to you. Our services include:

- Investment Planning
- Retirement Planning
- Inheritance Tax Planning
- Intergenerational Planning

For further details please contact:

**argent**  
CHARTERED FINANCIAL PLANNERS

Tel: 01494 257 856 | Email: [nick.barber@sjpp.co.uk](mailto:nick.barber@sjpp.co.uk)  
[www.argentwm.co.uk](http://www.argentwm.co.uk)

H2SJPO090 01/20

# NAPHILL LOCAL MINI MARKET Post Office

- |   |  |
|---|--|
| <ul style="list-style-type: none"> <li>• Newspapers &amp; Magazines (home delivery available)</li> <li>• Lottery</li> <li>• Fresh fruit &amp; vegetables</li> <li>• Freshly baked bread, rolls, sweet pastries &amp; hot savouries available daily</li> <li>• Frozen food &amp; ice creams</li> <li>• Organic &amp; Gluten free products</li> </ul> | <ul style="list-style-type: none"> <li>• Refillable Bio D washing up &amp; fabric conditioner</li> <li>• Stationery &amp; mailing products</li> <li>• Greeting cards</li> <li>• Beers, ales, spirits &amp; wines</li> <li>• Wide range of everyday grocery essentials</li> <li>• Postal services, free cash withdrawals &amp; cash deposits</li> </ul> |
|---|--|

**19 Main Road, Naphill, High Wycombe HP14 4QD**  
**Tel: Post Office: 01494 562173 Shop: 01494 563125**  
**Email: [Naphilllocal@outlook.com](mailto:Naphilllocal@outlook.com)**





# Conservatories by POG



**Replace your old conservatory roof with a  
Guardian Warm Roof and enjoy your new  
garden room all summer (and winter!)**

**Conservatories, Orangeries, Garden Rooms, Windows,  
Doors and Home Extensions.**

Aluminium, Hardwood, Softwood or PVCu.

*Based in High Wycombe, Buckinghamshire*



**[www.paynesofglass.co.uk](http://www.paynesofglass.co.uk)**

**Triple Glazing Specialists - No Extra Cost**

**Call us now on - 01494 565526**

**Email us at - [paynesofglass@live.com](mailto:paynesofglass@live.com)**



A person with short blonde hair is seen from the back, looking at a computer monitor. The monitor displays a dark interface with several bright, glowing rectangular elements. The scene is dimly lit, with the primary light source being the screen.

# SEE BETTER

JACKSON & Co



247 Main Road, Walters Ash // 01494 564600